

# Estimates of Croydon's Population

## Sources of Data

ONS. Population estimates for the UK, mid-2022. Published March 2024. [LINK TO DATA](#)

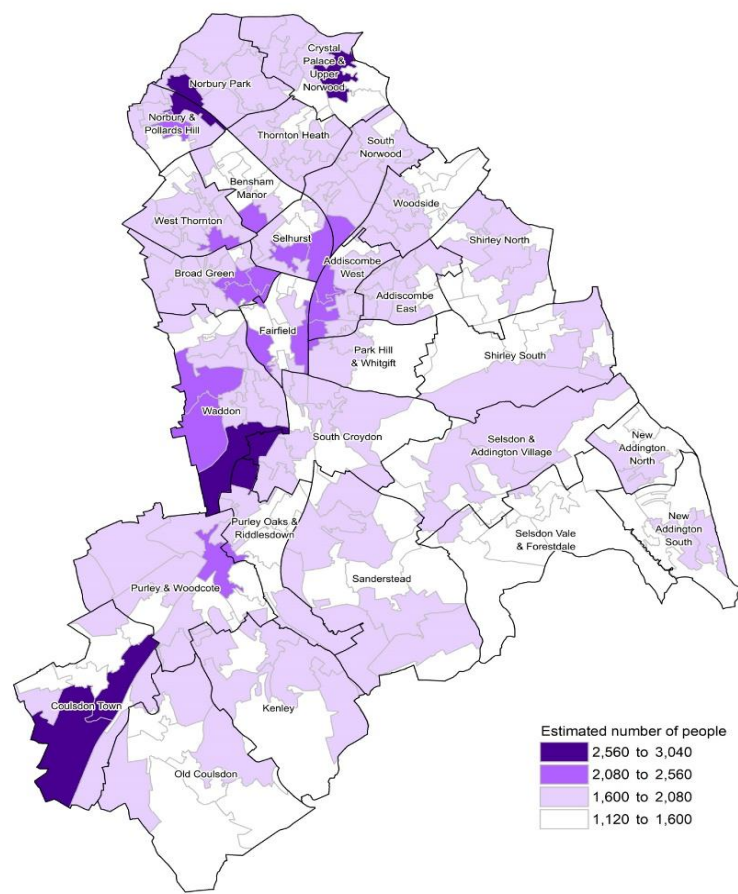
ONS. Population estimates for small geographical areas, mid-2022. Published March 2024. [LINK TO DATA](#)

GLA. Housing-led population projections by MSOA, 2020 (Identified Capacity Scenario). Published October 2021. [LINK TO DATA](#)

## Population

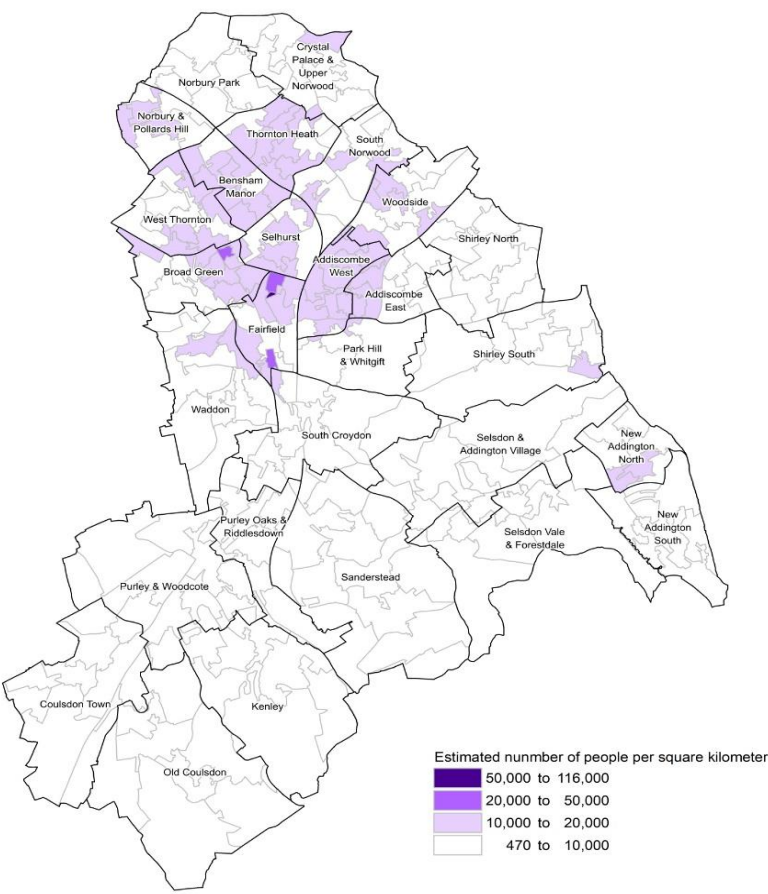
- > The estimated population of Croydon in the year to 30 June 2022 was **392,224** people  
This is the largest population of all the London boroughs
- > Croydon is the fifth largest borough in London, covering 86 square kilometres  
In mid-2022 Croydon was the eighth least populated borough with an estimated 4,535 people per square kilometre
- > For statistical purposes, Croydon is split into 229 small areas (called Lower Super Output Areas, or LSOAs)
- > The most population LSOAs are shown in dark purple on the below map and are spread across the borough
- > The small LSOA in the town centre is the most densely populated area of Croydon

Total Croydon Population  
ONS mid-year estimates, 2022



Reproduced by permission of Ordnance Survey on behalf of HMSO. © Crown copyright and database right 2019  
OS Licence number 10001927

Croydon Population Density  
ONS mid-year estimates, 2022

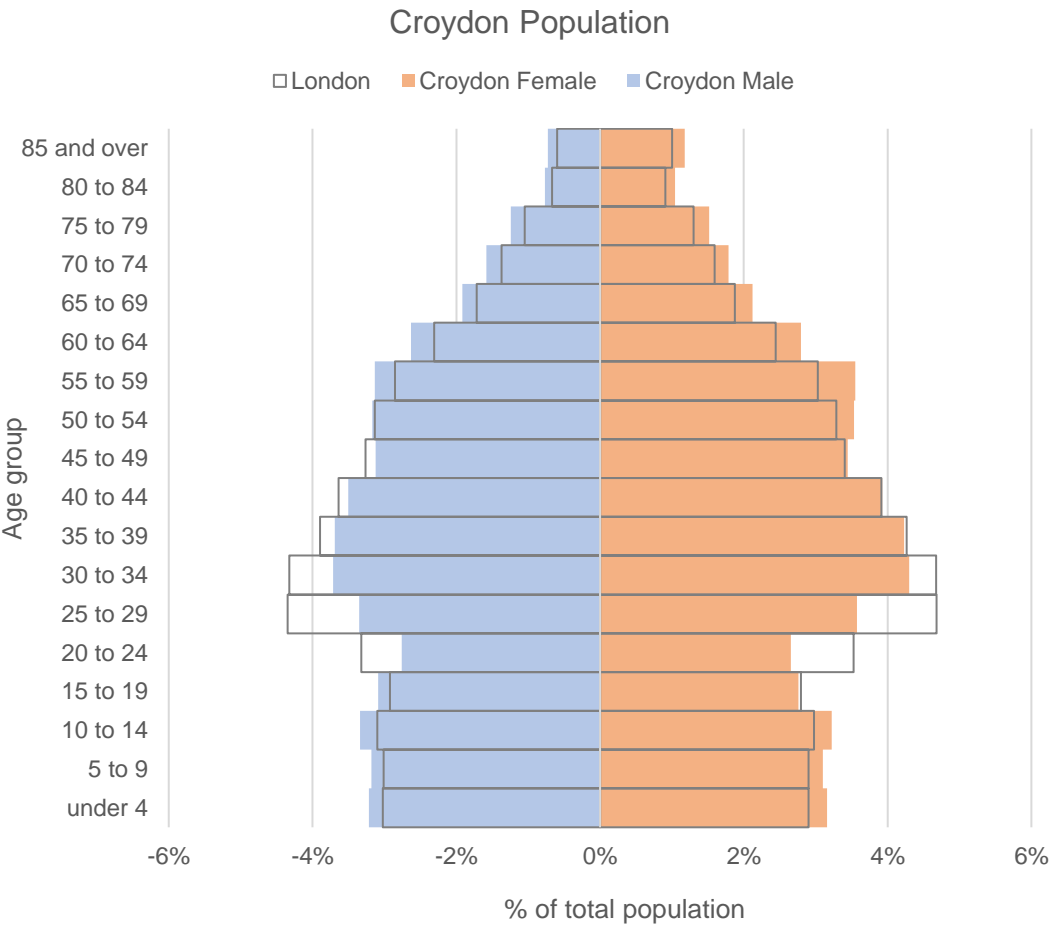


Reproduced by permission of Ordnance Survey on behalf of HMSO. © Crown copyright and database right 2019  
OS Licence number 10001927

Estimates of Croydon's Population

Demographics

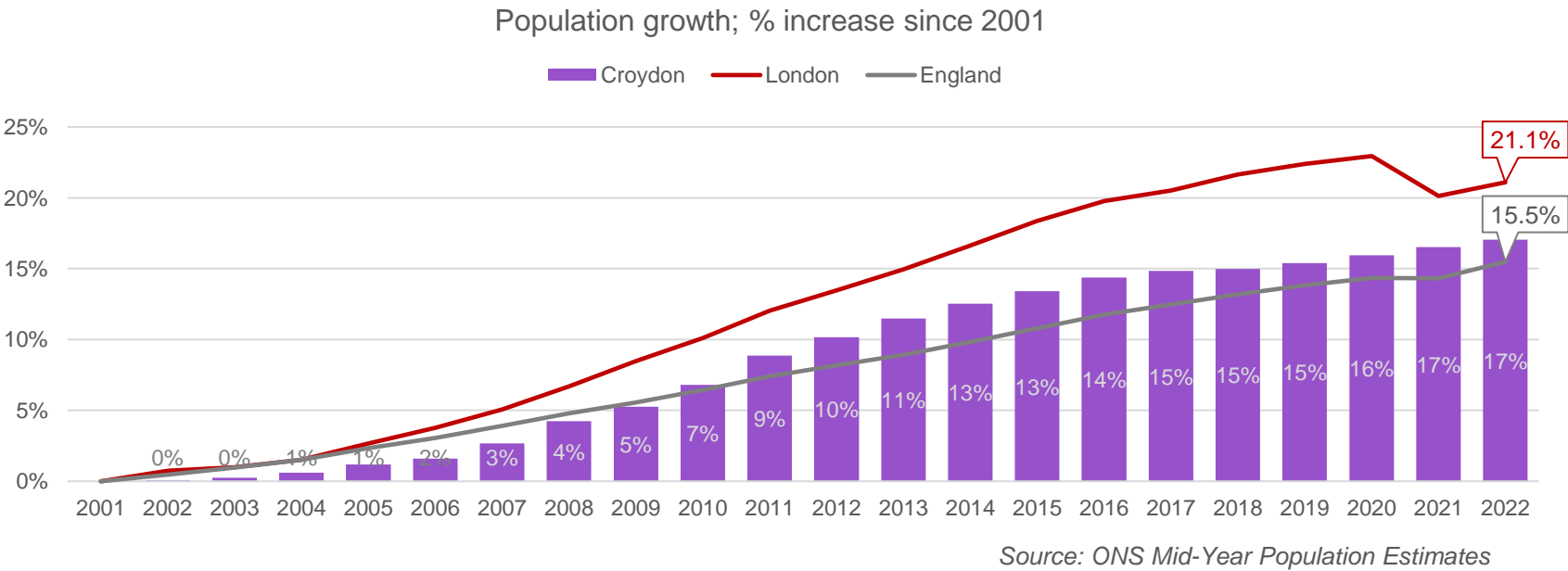
- > The median age of Croydon residents in 2022 was 37.9, two years older than the London median age (35.8) and two years younger than the England median age (40.5)
- > Croydon had the 11th highest median age of all London boroughs
- > The median age in Croydon has increased by 2.3 years since 2001 when it was 35.6
- > Compared to London, there are proportionately fewer Croydon residents aged 20-49 and more aged 0-14 and 50+.



Source: ONS Mid-year population estimates, 2022

Population growth

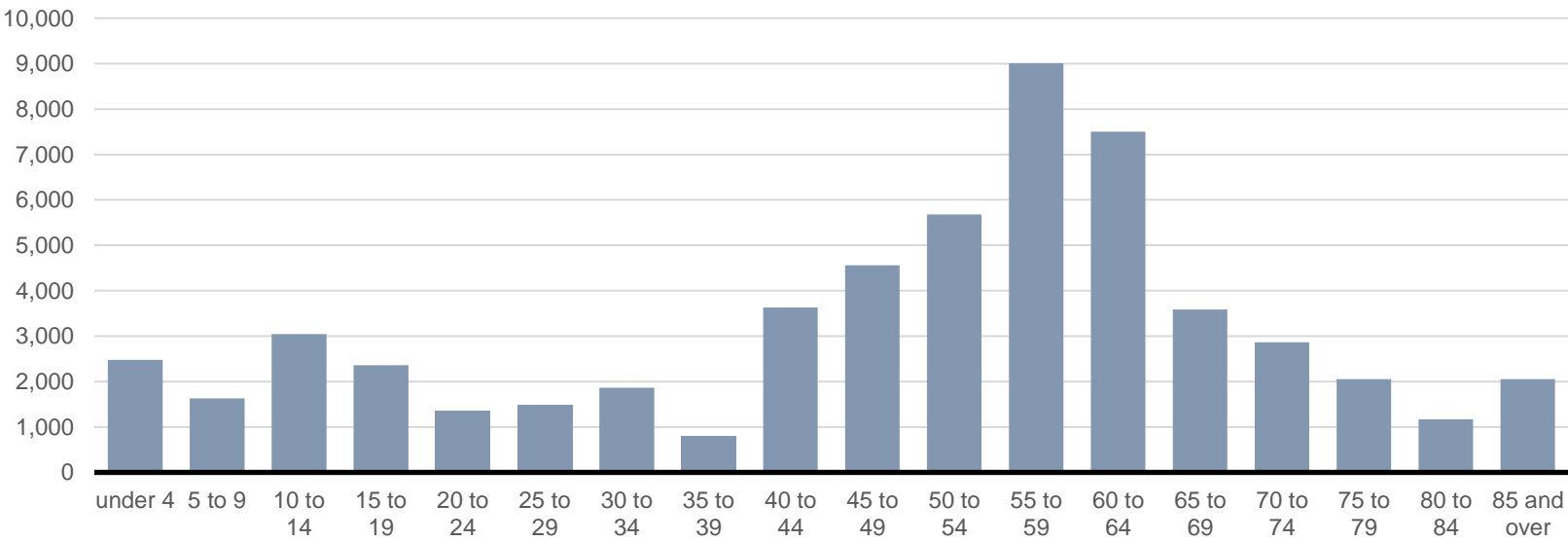
- > Since 2001, Croydon's population has grown by 17%, over 57,000 people
- > In the same time, the population of London has grown by almost 21.1%. Across all London boroughs, Croydon has seen the 12th smallest population increase.
- > Between 2021 and 2022 the number of people living in Croydon grew by just over 1,700 people, an increase of 0.4%.



Estimates of Croydon's Population

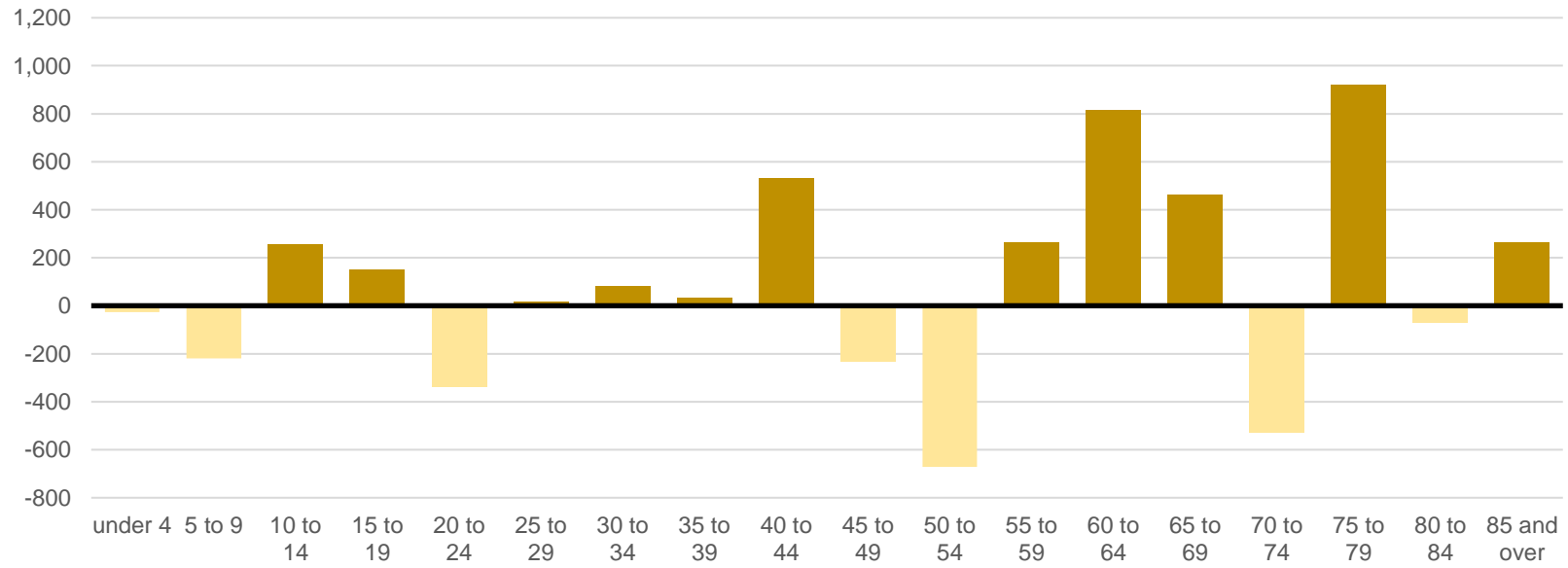
> This growth of over 57,000 people since 2001 is not evenly spread across age groups, it is particularly pronounced in those aged 50 to 64

Population growth; numerical change by age group from 2001 to 2022



> Since 2021, most age groups have seen an increase in the number of people apart from the very young (aged under 10), those aged 20-24, 45-54, 70-74 and 80-84. The largest decreases were in those aged under 50-54, the largest increases were in those aged 75 to 79.

Population growth; numerical change by age group from 2021 to 2022

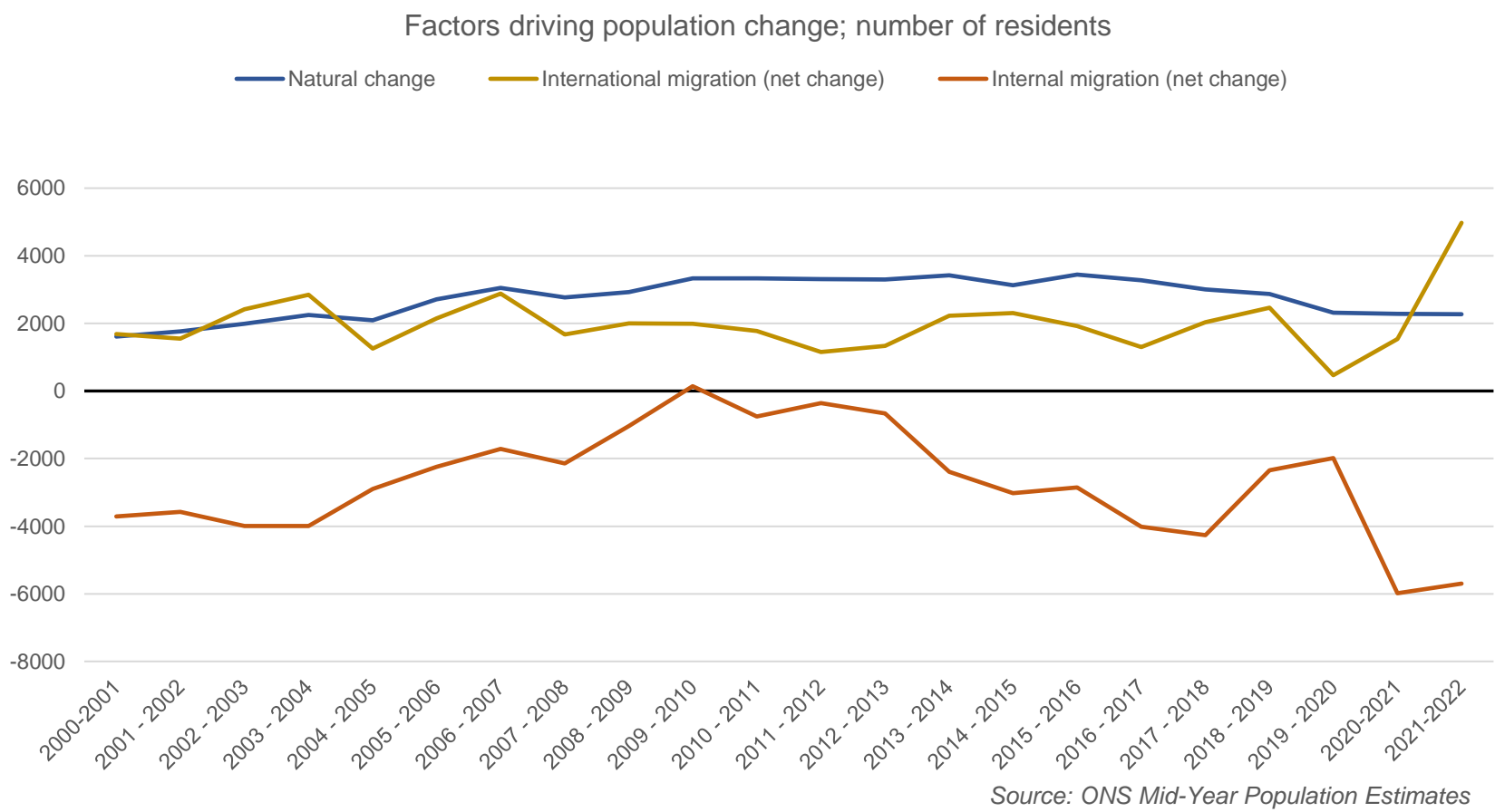


Source: ONS Mid-Year Population Estimates

Estimates of Croydon's Population

Factors driving population change

> The growth in population is due to natural change (i.e. more births than deaths) and international migration into the borough (so more people moving in from outside of the UK than leaving to move abroad)



> Slower population growth in recent years is largely due to a fall in net internal migration (so more people leaving the borough to live in other areas of the UK).

> Migration as a whole resulted in a net loss of people living within the borough. Around 700 more people moved out of the borough than moved in

> While the net change in internal and international migration is small, it is important to consider the scale of movement as this has implications for service delivery

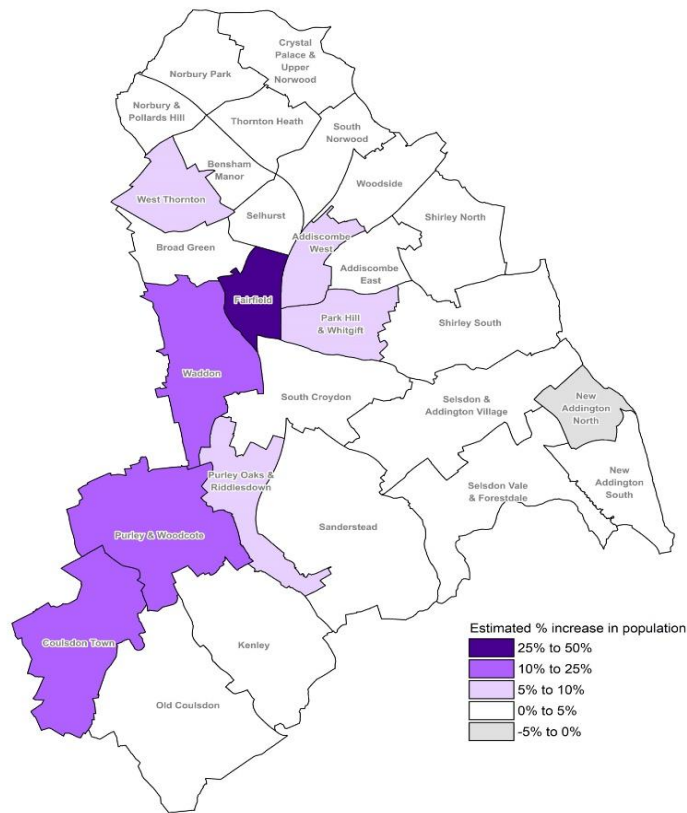
> Between 2021 and 2022, around 36,000 people moved into the borough and 37,000 people moved out, this is 19% of the total population moving in or out

Estimates of Croydon's Population

Population projections

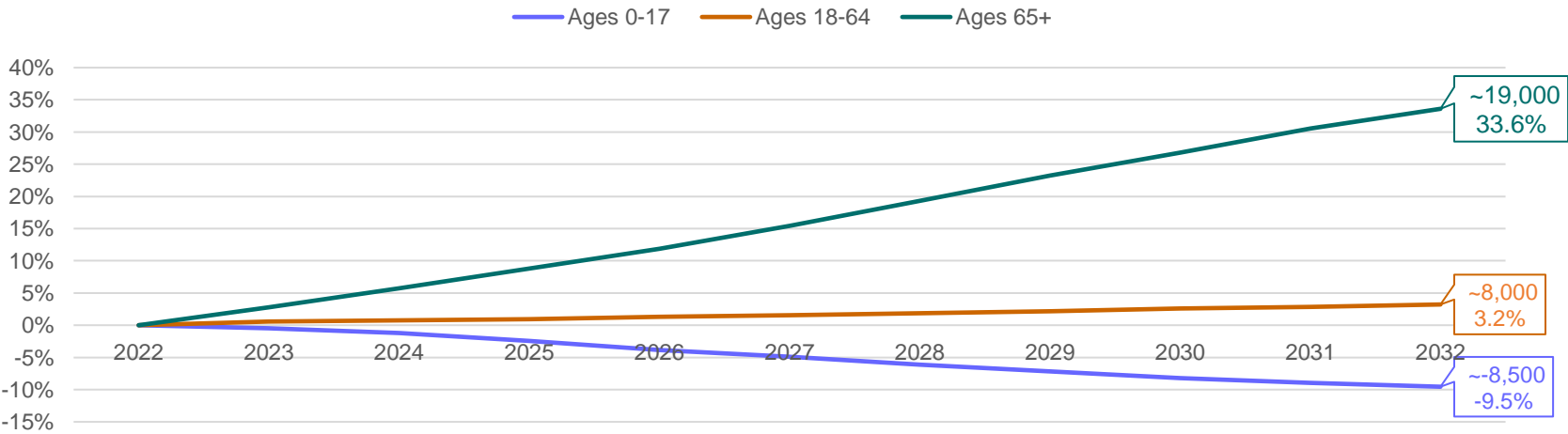
- > The population is expected to grow by 4.7% by 2032, meaning an additional 18,000 residents
- > The majority of this growth is in the town centre (Fairfield ward) with Waddon, Coulsdon Town and Purley & Woodside wards also seeing increases of 10% or greater
- > In the same time period, the younger population (aged 0-17) is expected to decrease by -9.5%, approximately -8,500 residents.
- > The older population (aged 65+) is expected to grow by 33.6% in the same time period, an additional 19,000 residents approximately.

Estimated percentage change in population between 2022 and 2032  
2021-based GLA housing-led population projections



Reproduced by permission of Ordnance Survey on behalf of HMSO. © Crown copyright and database right 2019  
OS Licence number 10001927

Projections of Population Growth in Croydon by age group



Source: GLA Housing-led Population Projections, Identified Capacity Scenario, 2021