

Estimates of Croydon's Population

Sources of Data

ONS. Population estimates for the UK, mid-2020. Published June 2021.

[LINK TO DATA](#)

ONS. Population estimates for small geographical areas, mid-2020. Published September 2021.

[LINK TO DATA](#)

GLA. Housing-led population projections by MSOA, 2020 (Identified Capacity Scenario).
Published October 2021.

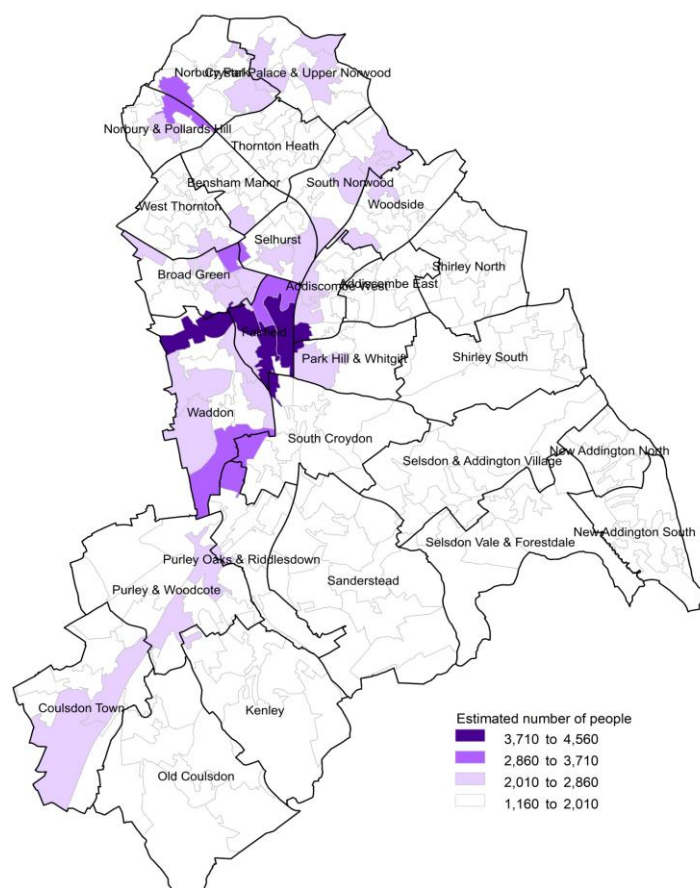
[LINK TO DATA](#)

Population

- > The estimated population of Croydon in the year to 30 June 2020 was **388,563** people
This is the second largest population of all the London boroughs, only Barnet has a larger population
- > Croydon is the fifth largest borough in London, covering 86 square kilometres
In mid-2020 Croydon was the eighth least populated borough with an estimated 4,493 people per square kilometre
- > For statistical purposes, Croydon is split into 220 small areas (called Lower Super Output Areas, or LSOAs)
- > Fairfield and the top of Waddon wards have the most populated LSOAs
- > The town centre is the most densely populated area of Croydon

Total Croydon Population

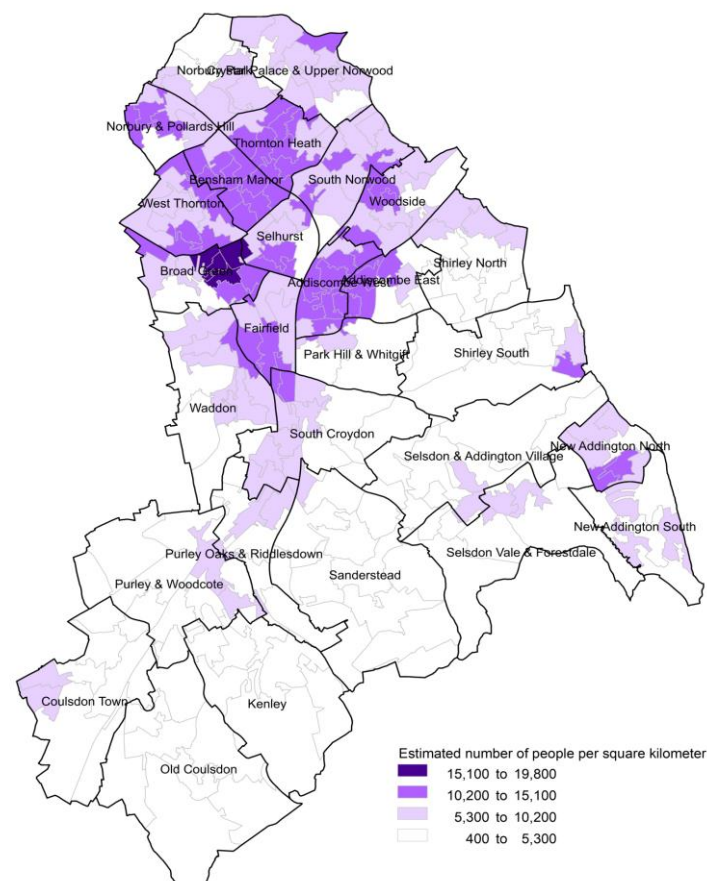
ONS mid-year estimates, 2020



Reproduced by permission of Ordnance Survey on behalf of HMSO. © Crown copyright and database right 2019
OS Licence number 10001927

Croydon Population Density

ONS mid-year estimates, 2020

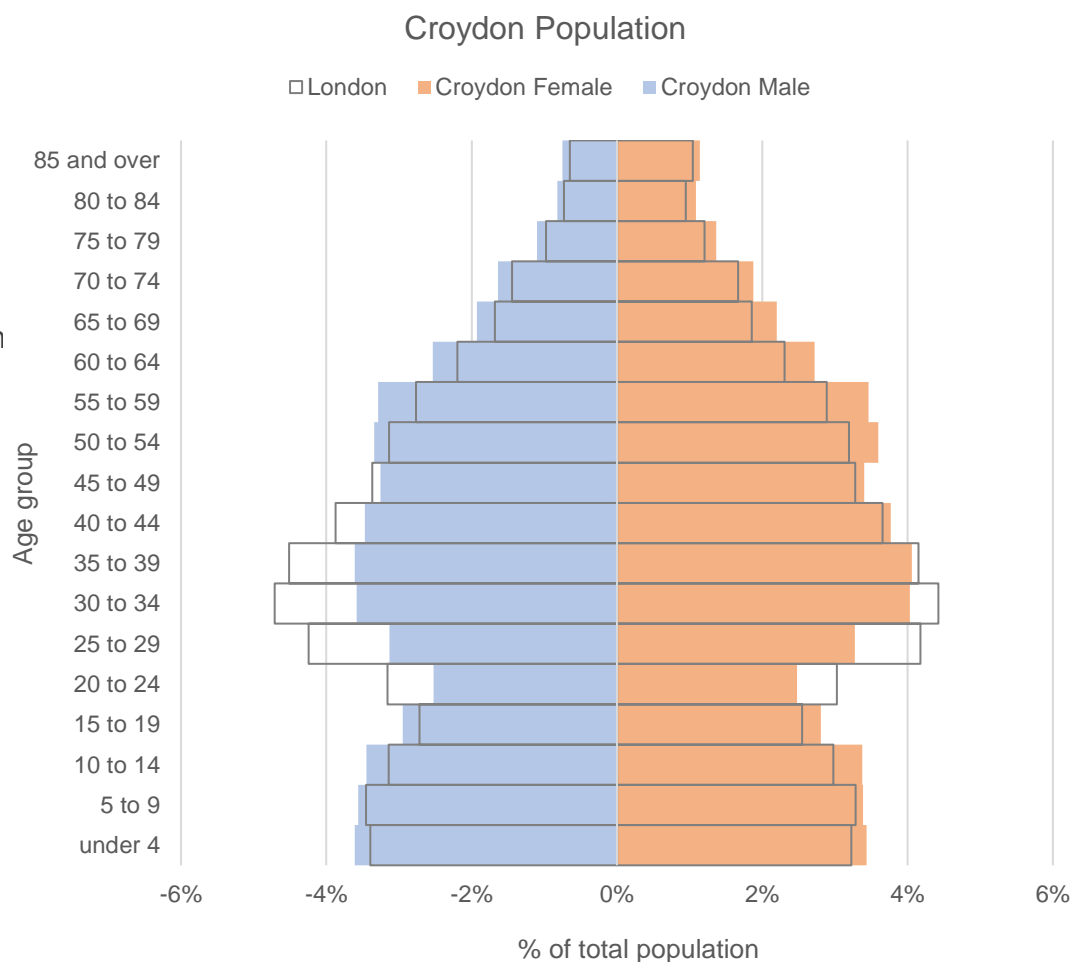


Reproduced by permission of Ordnance Survey on behalf of HMSO. © Crown copyright and database right 2019
OS Licence number 10001927

Estimates of Croydon's Population

Demographics

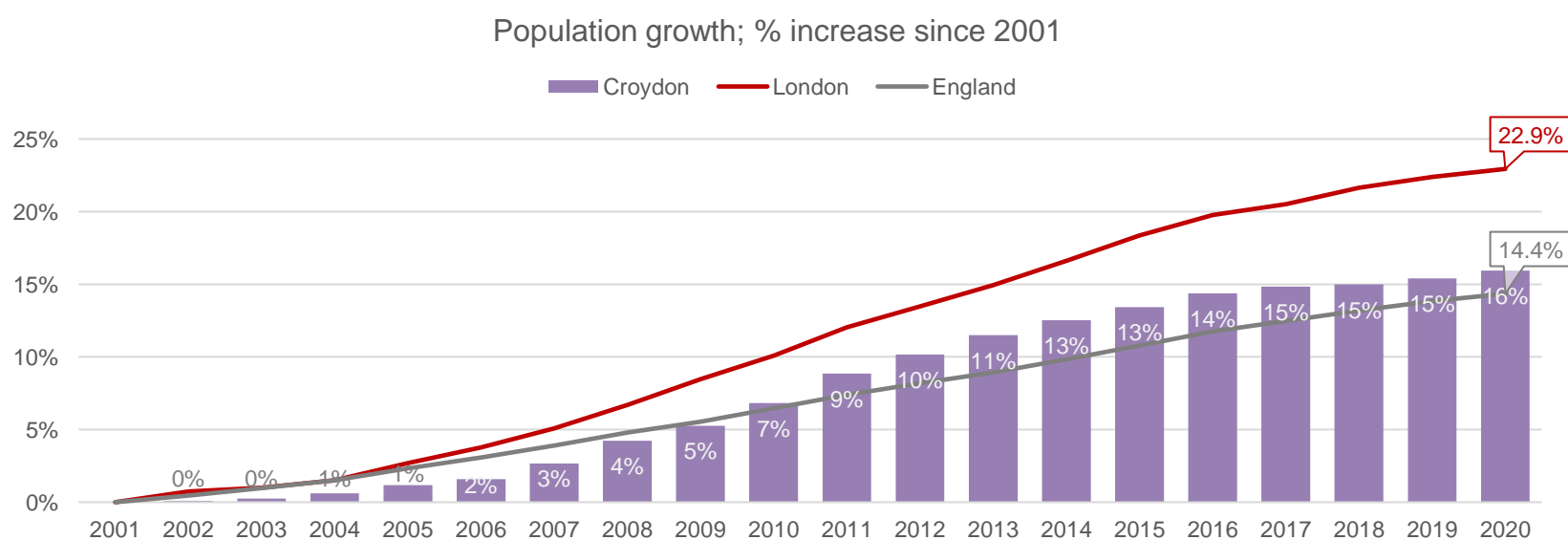
- > The median age of Croydon residents in 2020 was 37.9, two years older than the London median age (35.8) and two years younger than the England median age (40.2)
- > Croydon had the eighth highest median age of all London boroughs
- > The median age in Croydon has increased by 2.3 years since 2001 when it was 35.6
- > Compared to London, there are proportionately fewer Croydon residents aged 20-39 and more aged 10-14 and 50-69.



Source: ONS Mid-year population estimates, 2020

Population growth

- > Since 2001, Croydon's population has grown by 16%, over 53,000 people
- > In the same time, the population of London has grown by almost 23%. Across all London boroughs, Croydon has seen the 9th smallest population increase.
- > Between 2019 and 2020 the number of people living in Croydon grew by just over 1,800 people, an increase of 0.5%.

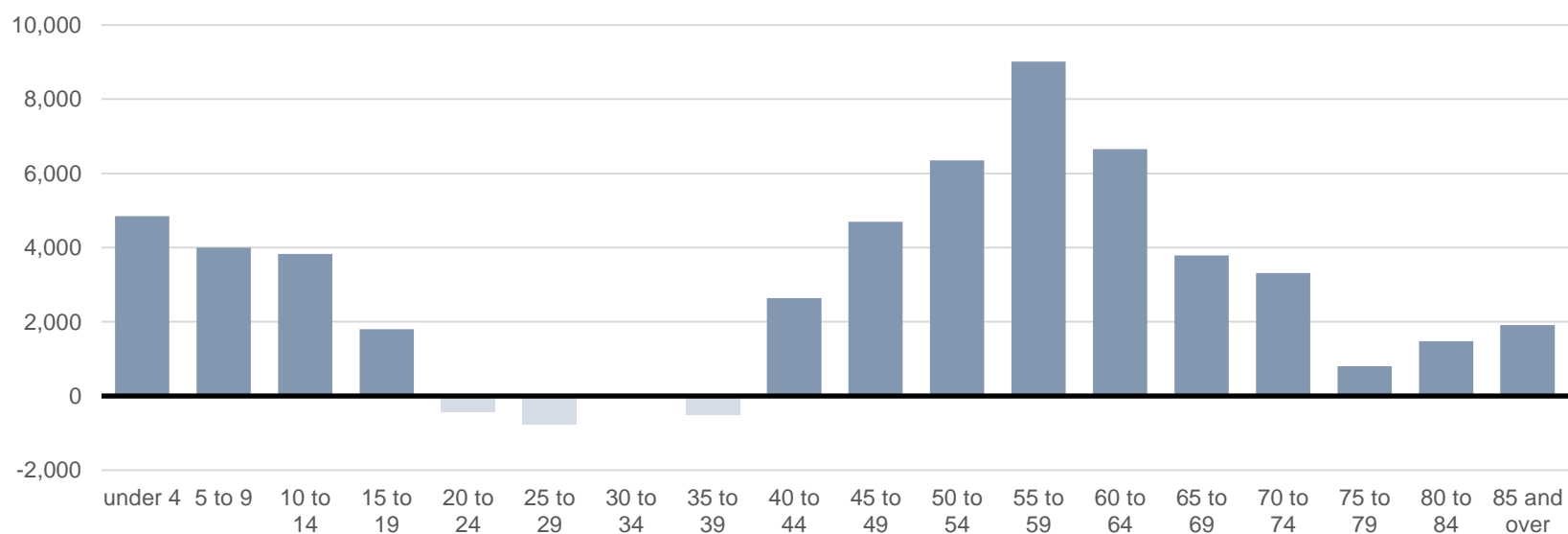


Source: ONS Mid-Year Population Estimates

Estimates of Croydon's Population

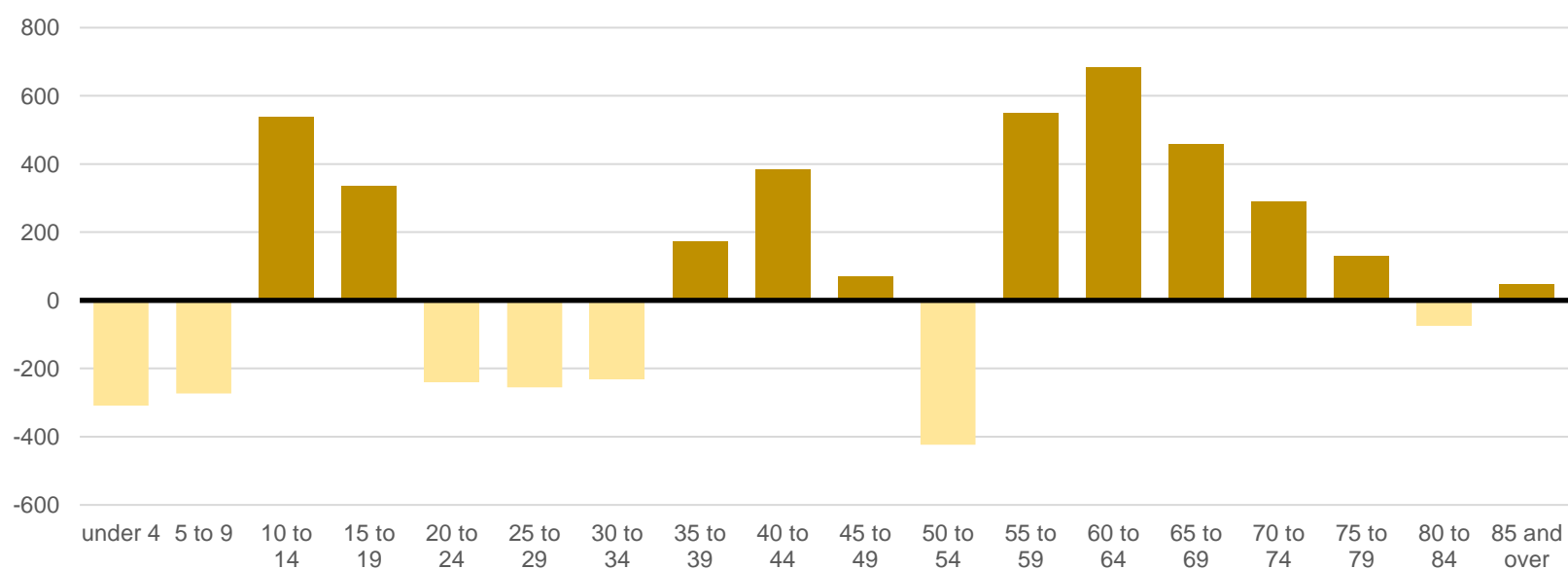
> This growth of over 53,000 people since 2001 is not evenly spread across age groups, it is particularly pronounced in the very young and those aged 45 to 64

Population growth; numerical change by age group from 2001 to 2020



> Since 2019, most age groups have seen an increase in the number of people apart from the very young (aged under 10), those aged 20-34, 50-54 and 80-84. The largest decreases were in those aged 50 to 54, the largest increases were in those aged 60 to 64.

Population growth; numerical change by age group from 2019 to 2020

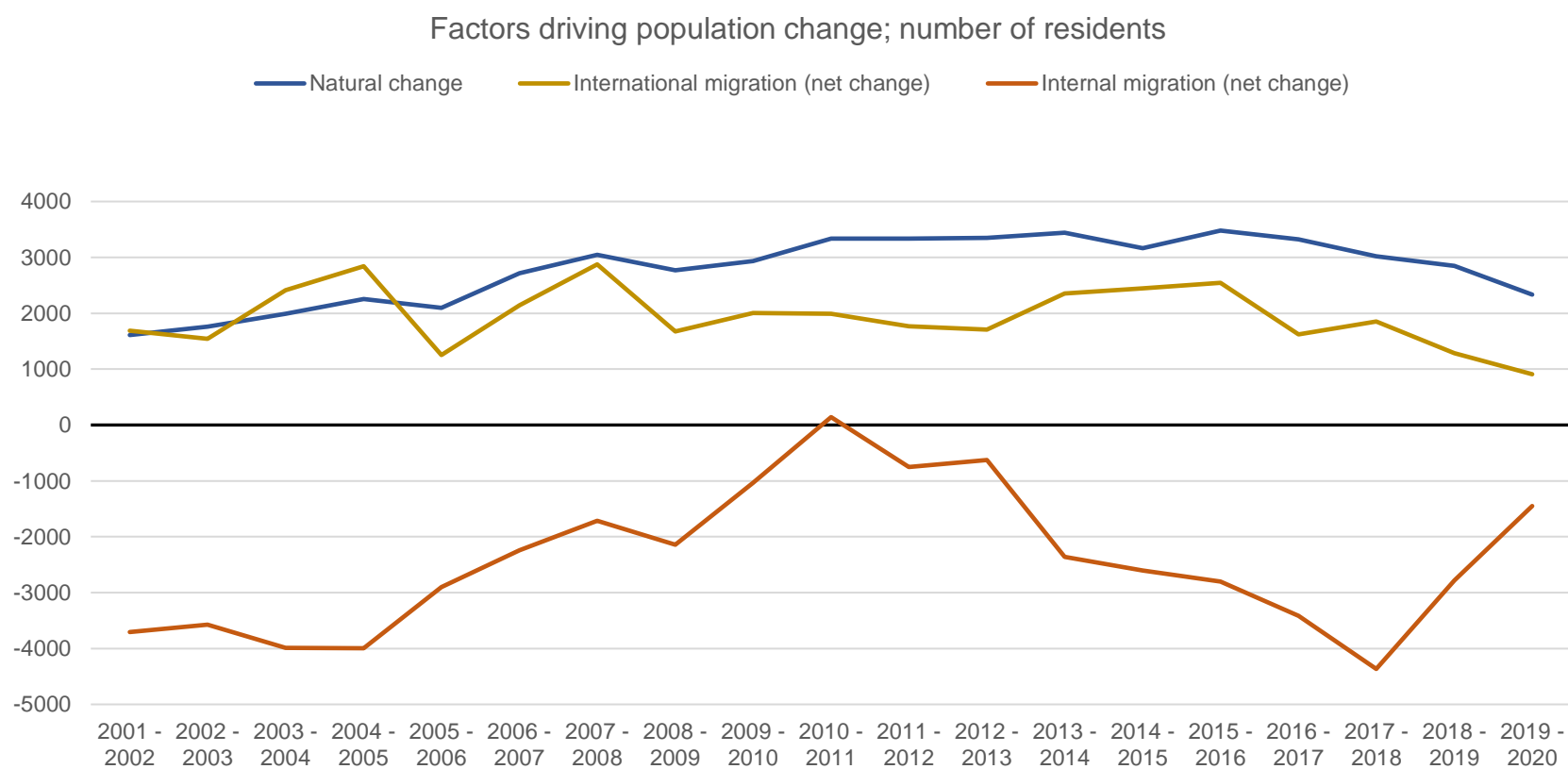


Source: ONS Mid-Year Population Estimates

Estimates of Croydon's Population

Factors driving population change

- > The growth in population is due to natural change (i.e. more births than deaths) and international migration into the borough (so more people moving in from outside of the UK than leaving to move abroad)



Source: ONS Mid-Year Population Estimates

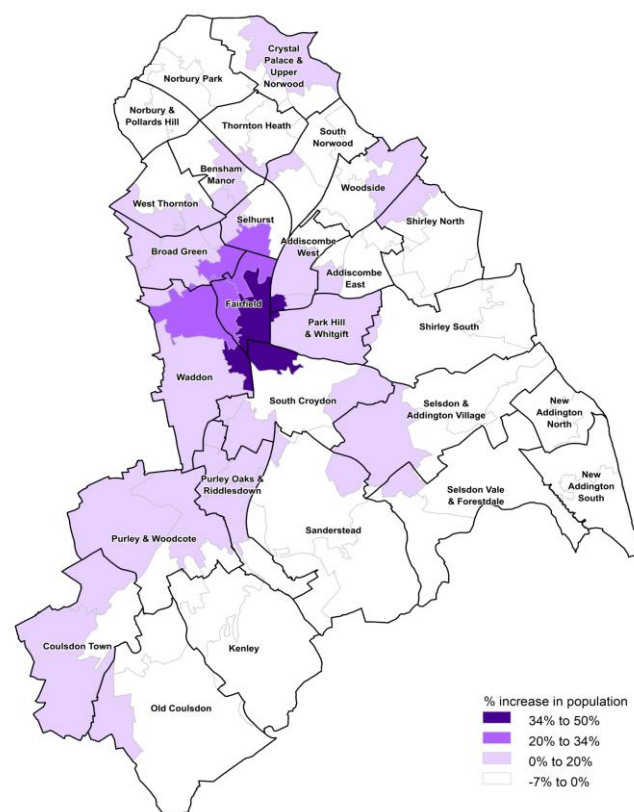
- > Slower population growth in recent years is largely due to a fall in net internal migration (so more people leaving the borough to live in other areas of the UK). While there are still more people leaving the borough to live in other areas of the UK than there are people moving into the borough, the scale of this has lessened in recent years.
- > Migration as a whole resulted in a net loss of people living within the borough. Around 500 more people moved out of the borough than moved in
- > While the net change in internal and international migration is small, it is important to consider the scale of movement as this has implications for service delivery
- > Between 2019 and 2020, 26,222 people moved into the borough and 26,762 people moved out, this is 13.7% of the total population moving in or out

Estimates of Croydon's Population

Population projections

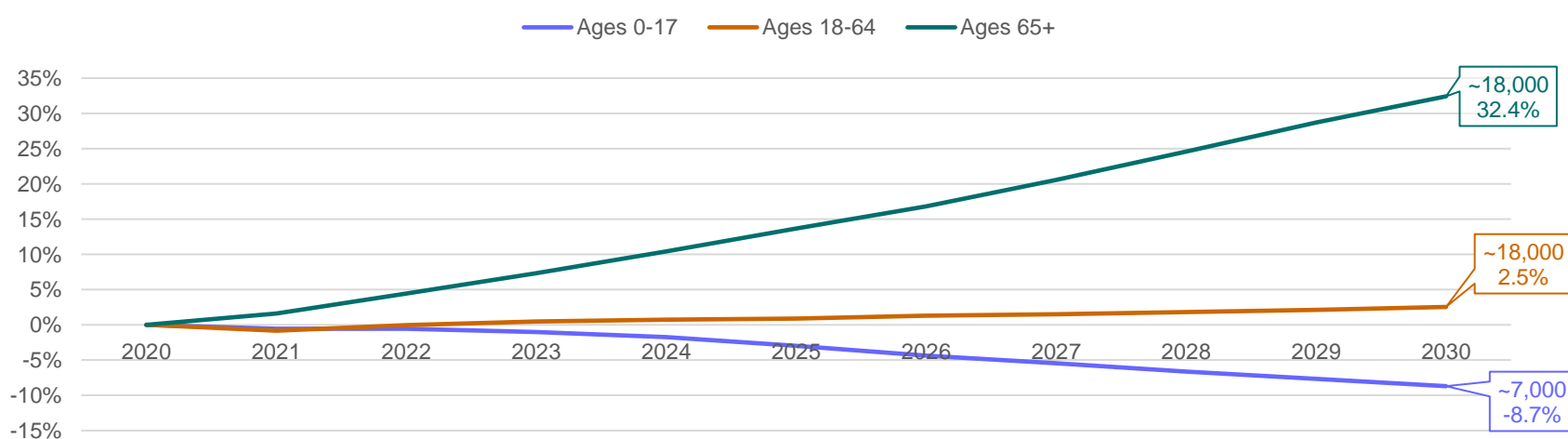
- > The population is expected to grow by 4.1% by 2030, meaning an additional 16,000 residents
- > The majority of this growth is around the town centre and the growth zone
- > In the same time period, the younger population (aged 0-17) is expected to decrease by -8.7%, approximately -8,000 residents. This decrease is largest in younger age groups
- > The older population (aged 65+) is expected to grow by 32.4% in the same time period, an additional ~18,000 residents.

Percentage change in population between 2020 and 2030
GLA housing-led population projections (Identified Capacity Scenario)



Reproduced by permission of Ordnance Survey on behalf of HMSO. © Crown copyright and database right 2019
OS Licence number 10001927

Projections of Population Growth in Croydon by age group



Source: GLA Housing-led Population Projections, Identified Capacity Scenario, 2021