

# Estimates of Croydon's Population

## Sources of Data

ONS. Population estimates for the UK, mid-2019. Published June 2020. [LINK TO DATA](#)

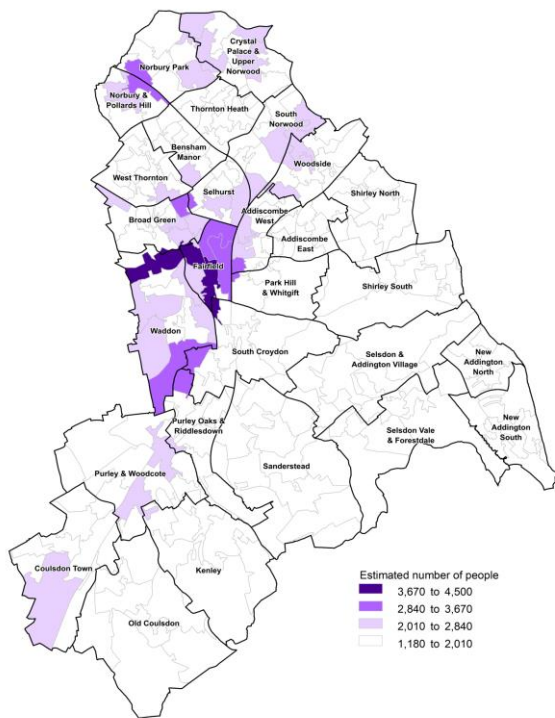
ONS. Population estimates for small geographical areas, mid-2019. Published September 2020. [LINK TO DATA](#)

GLA. Housing-led population projections by MSOA, 2018. Published February 2020. [LINK TO DATA](#)

## Population

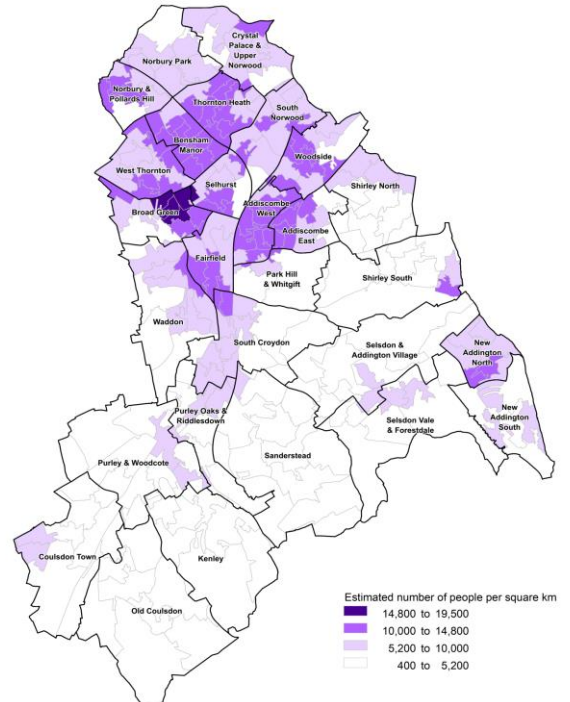
- > The estimated population of Croydon in the year to 30 June 2019 was **386,710** people  
This is the second largest population of all the London boroughs, only Barnet has a larger population
- > Croydon is the fifth largest borough in London, covering 86 square kilometres  
In mid-2019 Croydon was the eighth least populated borough with an estimated 4,497 people per square kilometre
- > For statistical purposes, Croydon is split into 220 small areas (called Lower Super Output Areas, or LSOAs)
- > The most populated small LSOA is at the top of Waddon ward
- > The town centre is the most densely populated area of Croydon

Total Croydon Population  
ONS mid-year estimates, 2019



Reproduced by permission of Ordnance Survey on behalf of HMSO. © Crown copyright and database right 2019  
OS Licence number 10001927

Croydon Population Density  
ONS mid-year estimates, 2019

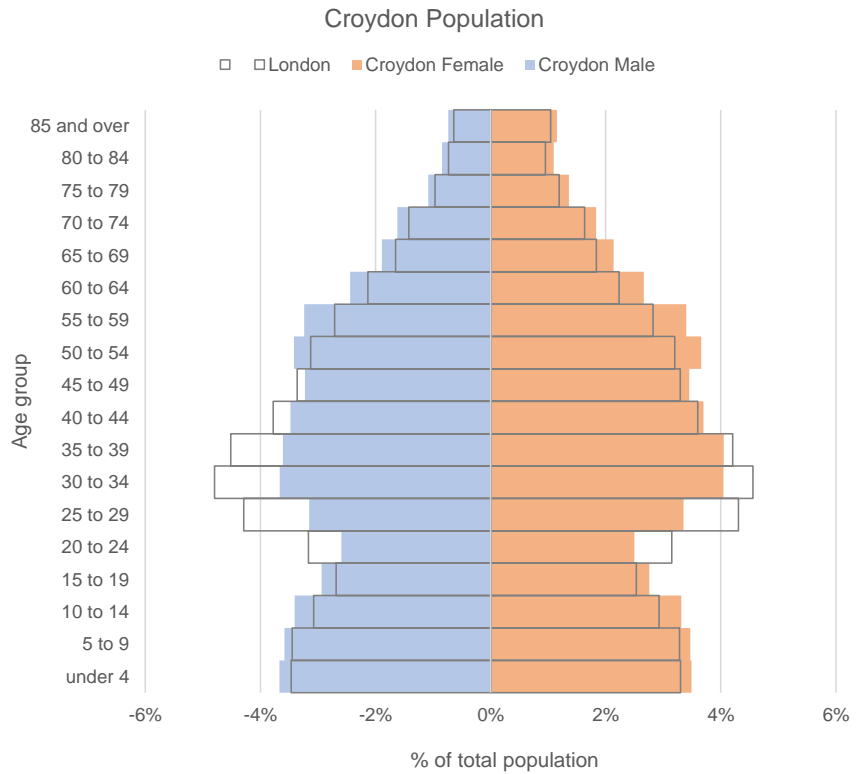


Reproduced by permission of Ordnance Survey on behalf of HMSO. © Crown copyright and database right 2019  
OS Licence number 10001927

# Estimates of Croydon's Population

## Demographics

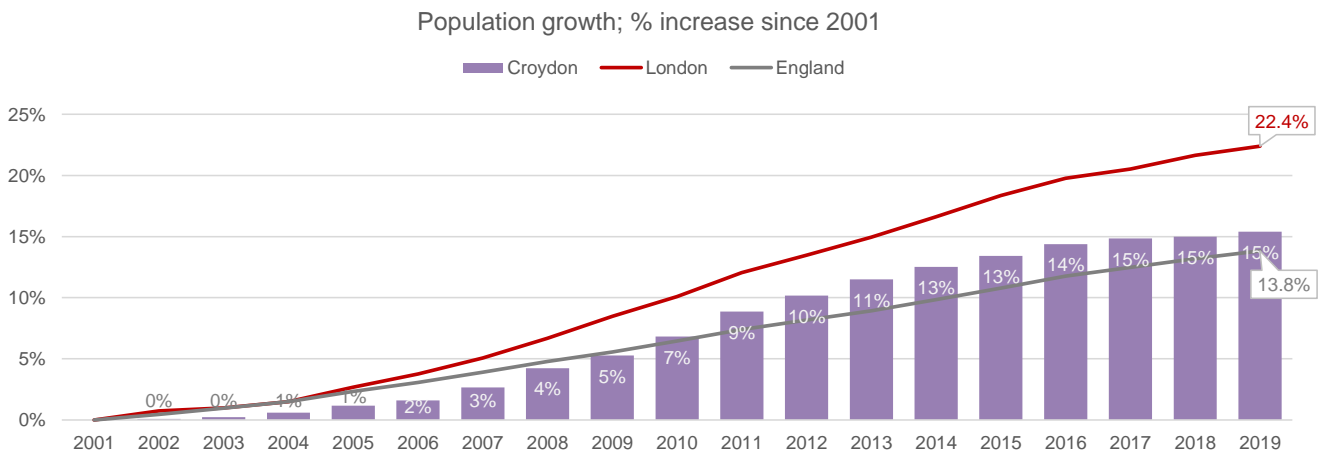
- > The median age of Croydon residents in 2019 was 37.7, two years older than the London median age (35.6) and two years younger than the England median age (40)
- > Croydon had the ninth highest median age of all London boroughs
- > The median age in Croydon has increased by 2.1 years since 2001 when it was 35.6
- > Compared to London, there are proportionately fewer Croydon residents aged 20-39



Source: ONS Mid-year population estimates, 2019

## Population growth

- > Since 2001, Croydon's population has grown by 15.4%, just over 51,000 people
- > In the same time, the population of London has grown by 22%. Across all London boroughs, Croydon has seen the 9th smallest population increase.
- > Between 2018 and 2019 the number of people living in Croydon grew by just less than 1,500 people.

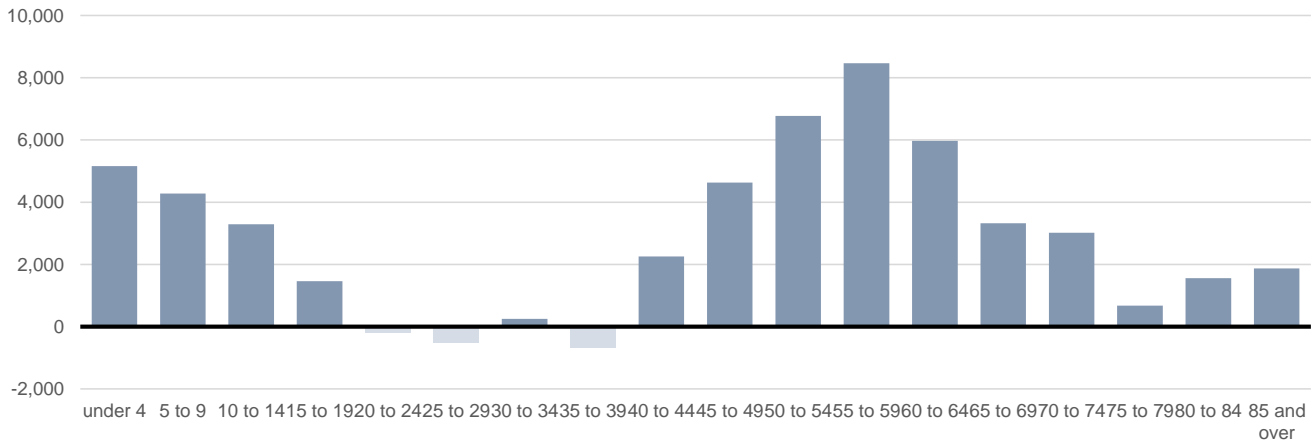


Source: ONS Mid-Year Population Estimates

## Estimates of Croydon's Population

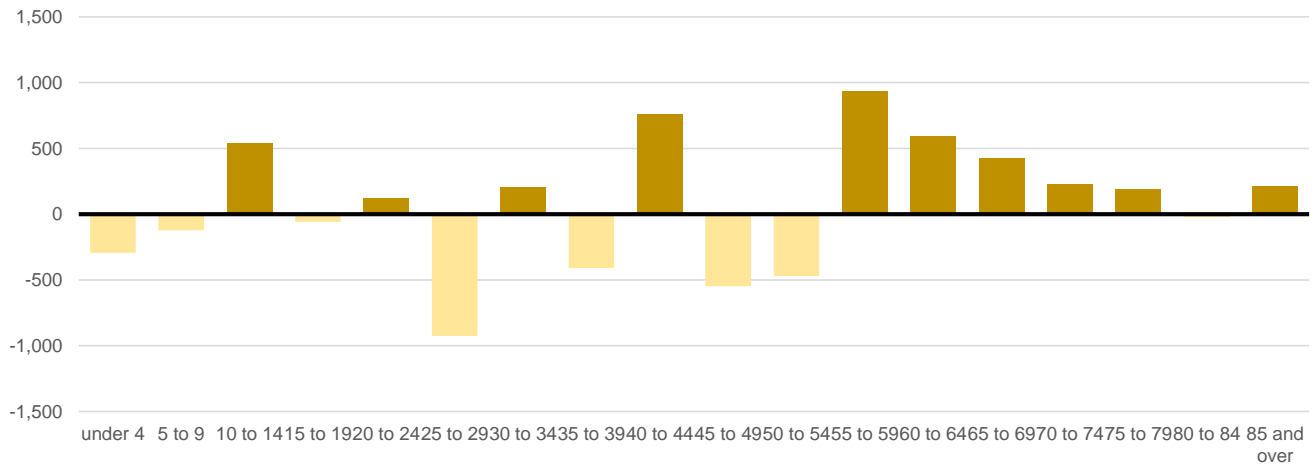
> This growth of over 51,000 people since 2001 is not evenly spread across age groups, it is particularly pronounced in the very young and those aged 45 to 64

Population growth; numerical change by age group from 2001 to 2019



> Since 2018, most age groups under the age of 55 have seen a decrease in the number of people apart from those aged 10-14, 20-24, 30-24 and 40 to 44. The largest decreases were in those aged 25 to 29, the largest increases were in those aged 55 to 59

Population growth; numerical change by age group from 2018 to 2019

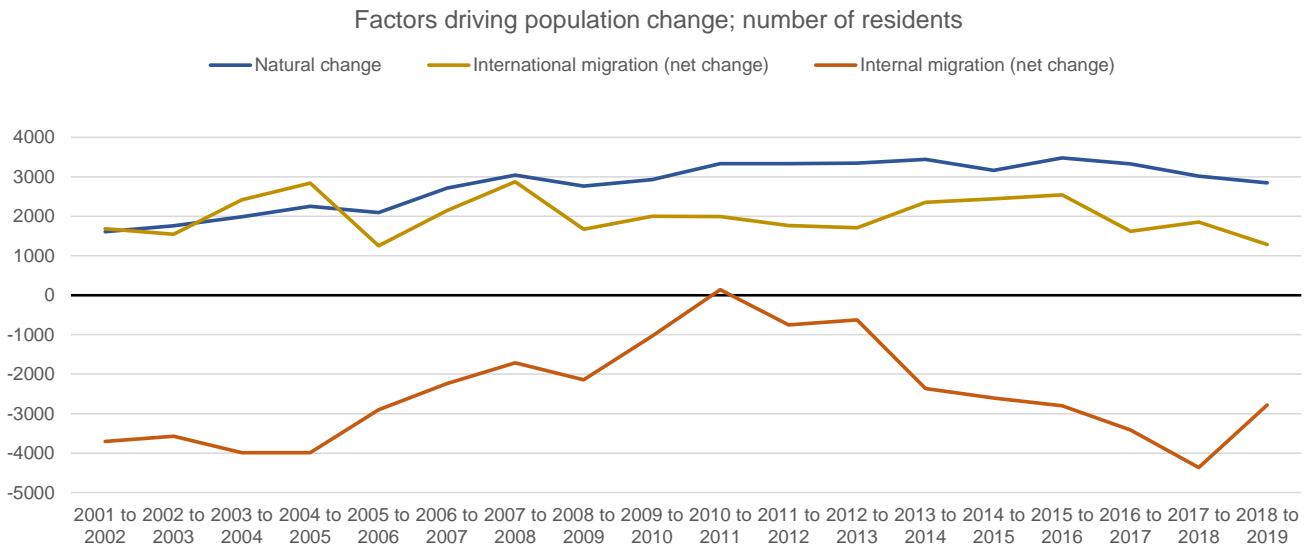


Source: ONS Mid-Year Population Estimates

## Estimates of Croydon's Population

### Factors driving population change

> The growth in population is due to natural change (i.e. more births than deaths) and international migration into the borough (so more people moving in from outside of the UK than leaving to move abroad)



Source: ONS Mid-Year Population Estimates, 2018

> Slower population growth in recent years is largely due to a fall in net internal migration (so more people leaving the borough to live in other areas of the UK), though this has shown an upturn in the latest year

> Migration as a whole resulted in a net loss of people living within the borough. Around 1,500 more people moved out of the borough than moved in

> While the net change in internal and international migration is small, it is important to consider the scale of movement as this has implications for service delivery

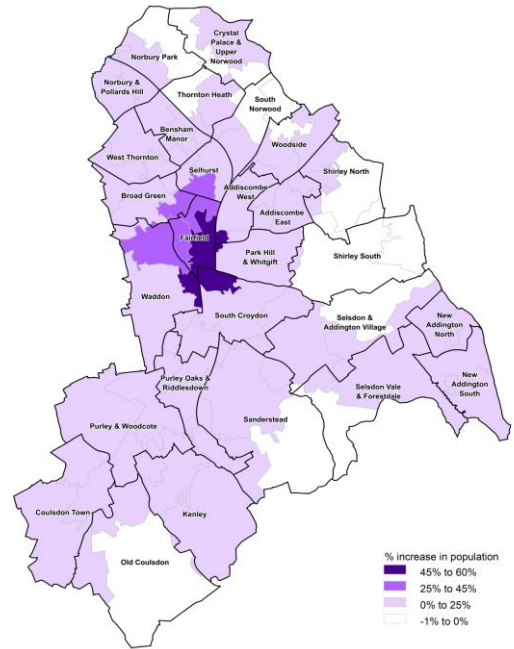
> Between 2018 and 2019, 28,342 people moved into the borough and 29,837 people moved out, this is 15.1% of the total population moving in or out

# Estimates of Croydon's Population

## Population projections

- > The population is expected to grow by 9.5% by 2030, meaning an additional 35,000 to 40,000 residents
  
- > The majority of this growth is around the town centre and the growth zone
  
- > In the same time period, the under 18 population is expected to grow by 2.5%, an additional 2,250 residents  
As with the general population, this growth is largely concentrated around the town centre
  
- > The older population (aged 65+) is expected to grow by 34% in the same time period, an additional 18,000 residents  
This change is also concentrated around the town centre but can be seen across the borough

Percentage change in population between 2019 and 2030  
GLA housing-led population projections



Reproduced by permission of Ordnance Survey on behalf of HMSO. © Crown copyright and database right 2019  
OS Licence number 10001927