

Local Overview

Croydon

July 2019



INTELLIGENT
LONDON

Purpose of this dashboard

This dashboard draws together a range of performance indicators into a concise, graphical report. It compares your Local Authority performance against all other London LAs and England, and shows trends over time. It can be used to:

- identify relative strengths and weaknesses in performance
- plan and commission services
- inform self-evaluation and set targets
- demonstrate impact and effectiveness

Contents

- 3 How to interpret the analysis
- 4 Local Landscape
- 5 Pupil characteristics and behaviour
- 6 Secondary and post-16 attainment
- 7 Pupil destinations
- 8 Travel and participation
- 9 Notes

Latest updates

Updated: School roll numbers

Updated: Secondary demographics

Updated: Secondary fixed term exclusions

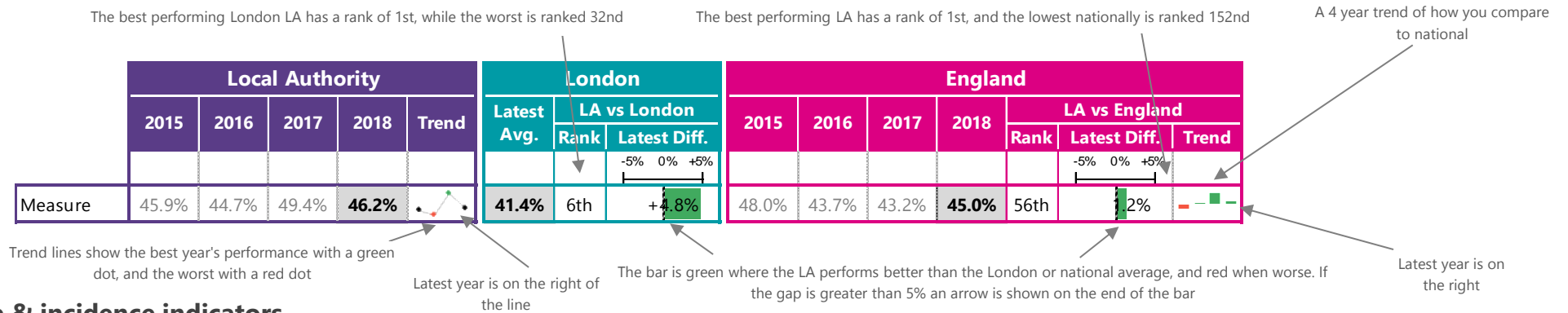
How to interpret the analysis

Each indicator on the dashboard has:

- a trend line to show the LA's change over time for up to four years (subject to availability of the data)
- a rank of the LA indicator against the 32 other London LAs and the 152 LAs nationally (although in some instances some LA data is suppressed and therefore excluded from the rankings)
- two bar charts showing the difference to the London average and the national average. Note that if the indicator is a percentage the difference is in percentage points; for example, 20% vs 23% is a 3% point difference. If the indicator is a number, the difference is a percentage, for example, 100 vs 110 is a 10% difference.
- a 4 year trend showing how the LA performs vs national based on the same basis as the two bar charts. The latest year of data is on the right. There are two types of indicator, performance indicators and volume & incidence indicators, as shown below:

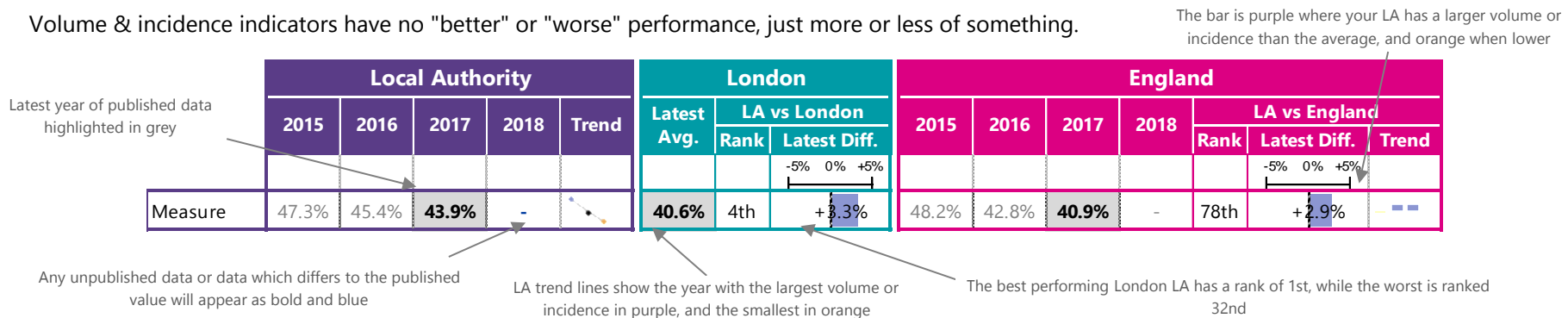
Performance indicators

Performance indicators are those that allow the measurement of "better" or "worse" performance. Note that for some performance indicators better performance means a higher percentage (e.g. achievement of attainment thresholds), while in other cases lower means better (e.g. absence rates).

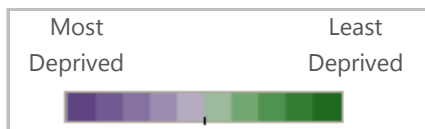
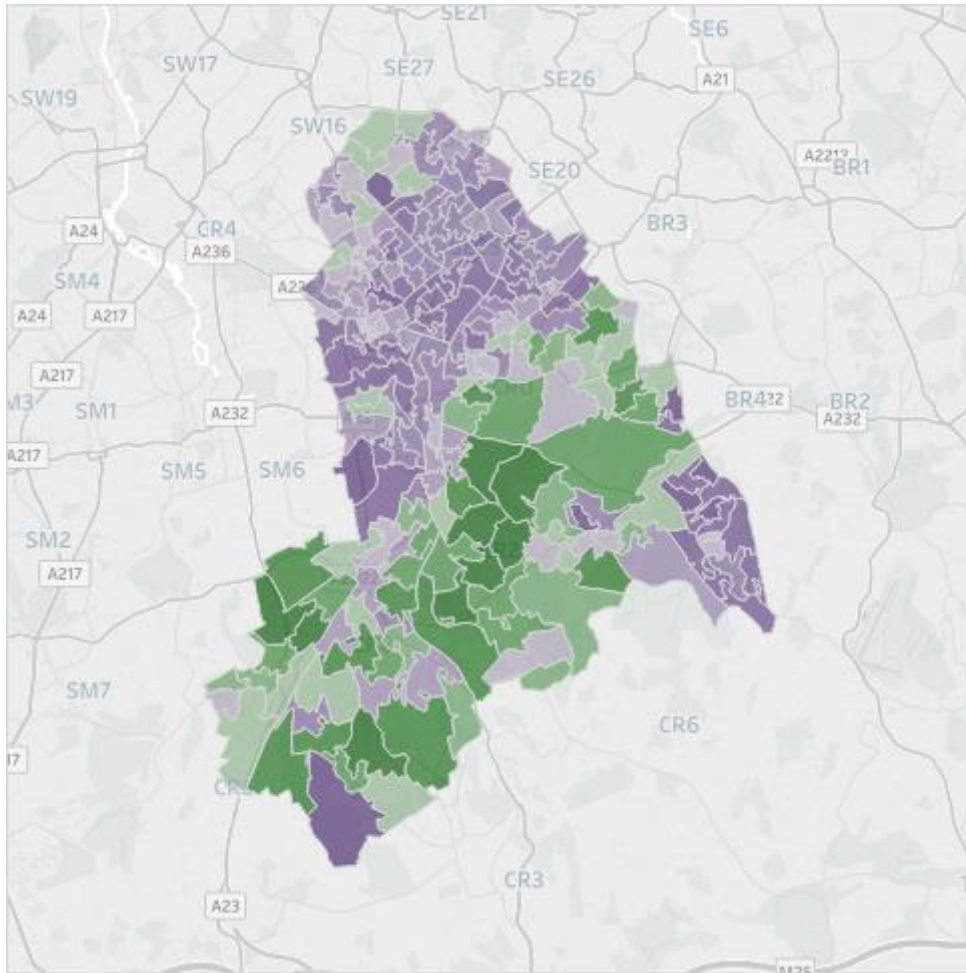


Volume & incidence indicators

Volume & incidence indicators have no "better" or "worse" performance, just more or less of something.



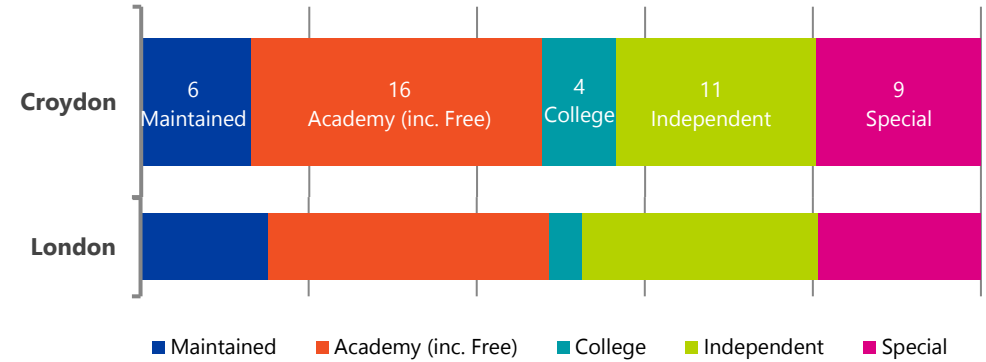
Income Deprivation Affecting Children (IDACI) Map



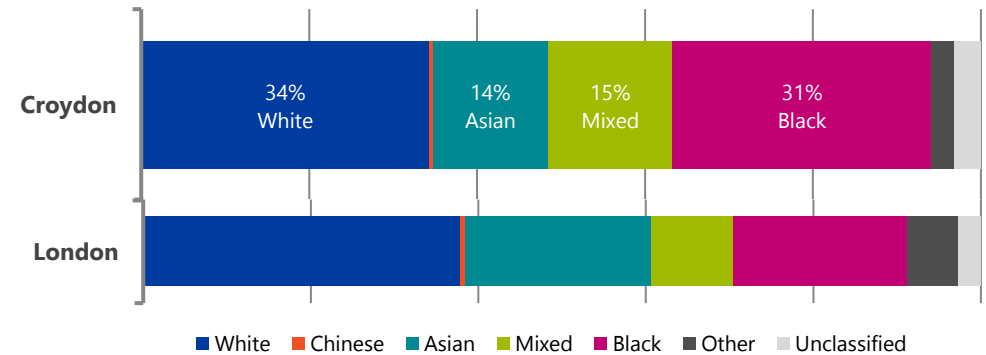
Deprivation ranks are based on the Income Deprivation Affecting Children Index (IDACI). This ranks each LSOA (an area of about 1000 households) in order of the 32,844 LSOAs nationally. LSOAs are grouped into 10 coloured bands, where the darkest purple is an LSOA in the 10% most deprived nationally, and darkest green is in the 10% least deprived nationally.

Breakdown Analysis

Composition of Secondary and Post-16 Provision



Ethnicity



		Croydon					London			England							
		2016	2017	2018	2019	Trend	Latest Avg.	LA vs London		2016	2017	2018	2019	LA vs England			
								Rank	Latest Diff.					Rank	Latest Diff.	Trend	
LA Info																	
Secondary state-funded pupil roll		22,193	22,206	22,196	22,965												
Special school state-funded pupil roll		795	819	936	1,009												
Demographics																	
Secondary																	
Free School Meals eligible % (FSM)		17.2%	16.6%	17.4%	19.9%		17.4%	23rd	+2.5%	13.2%	12.9%	12.4%	14.1%	121st	+5.8%		
English as additional language % (EAL)		26.3%	26.2%	26.8%	26.3%		41.0%	27th	-14.7%	15.7%	16.2%	16.6%	16.9%	41st	+3.4%		
SEN Support %		11.5%	10.8%	10.9%	11.1%		10.4%	14th	+0.7%	11.0%	10.7%	10.6%	10.8%	75th	+0.3%		
SEN education, health and care plan % (EHCP)		1.9%	1.9%	2.0%	2.1%		2.0%	14th	+0.1%	1.7%	1.7%	1.6%	1.7%	37th	+0.4%		
Abs. & Excl.																	
Secondary																	
Exclusions - Fixed Term (Secondary %)		6.5%	7.6%	7.8%	-		7.6%	17th	+0.2%	8.5%	9.4%	10.1%	-	52nd	-2.3%		
Absence - Overall		4.8%	5.2%	5.3%	-		5.0%	24th	+0.3%	5.2%	5.4%	5.5%	-	51st	-0.2%		
Absence - Authorised		3.1%	3.3%	3.2%	-		3.5%	6th	-0.3%	3.8%	3.8%	3.9%	-	18th	-0.7%		
Absence - Unauthorised		1.7%	1.9%	2.1%	-		1.5%	31st	+0.6%	1.4%	1.5%	1.6%	-	119th	+0.5%		
Absence - Persistent Absentees		11.8%	12.9%	13.1%	-		12.0%	23rd	-1.1%	13.1%	13.5%	13.9%	-	51st	-0.8%		

London rank is generally out of 32. National Rank is generally out of 152. This may vary slightly if any relevant authorities are suppressed for a particular metric. '-' means data is unavailable. '*' means data is suppressed for data protection reasons.

		Croydon					London			England							
		2015	2016	2017	2018	Trend	Latest Avg.	LA vs London		2015	2016	2017	2018	LA vs England			
								Rank	Latest Diff.					Rank	Latest Diff.	Trend	
KS4	Headline	Attainment 8	-	48.5	45.0	45.8	49.4	29th	-7.2%	-	50.1	46.4	46.6	81st	-1.8%		
		Progress 8	-	+0.08	+0.06	+0.07	+0.23	25th	-0.16	-	-0.03	-0.03	-0.02	44th	+0.09		
		9-4 English & maths	62%	61%	61%	63%	68%	25th	-5%	60%	63%	64%	64%	84th	-1%		
		9-5 English & maths	-	-	41%	42%	49%	27th	-7%	-	-	43%	43%	77th	-1%		
KS4	EBacc	English Baccalaureate APS	-	-	-	4.0	4.4	28th	-9.6%	-	-	-	4.1	76th	-1.3%		
		English Baccalaureate Entries	46%	45%	43%	46%	52%	25th	-6%	39%	40%	38%	38%	38th	+8%		
		English Baccalaureate (9-4)	27%	24%	24%	24%	33%	30th	-9%	24%	25%	24%	24%	70th	-		
		English Baccalaureate (9-5)	-	-	21%	16%	23%	28th	-7%	-	-	21%	17%	68th	-1%		
Post-16	KS5	APS per Entry - All level 3	-	32.4	33.7	28.3	31.9	29th	-11.3%	-	31.4	32.3	31.8	137th	-11.1%		
		A level	-	27.8	28.4	27.9	32.2	29th	-13.4%	-	30.4	31.1	32.1	138th	-13.1%		
		Academic	-	27.8	28.5	28.0	32.3	29th	-13.3%	-	30.6	31.3	32.3	138th	-13.3%		
		Tech level	-	37.5	38.6	31.4	29.3	9th	+7.1%	-	30.8	32.3	28.1	32nd	+11.7%		
		Applied General	-	37.0	40.3	28.2	28.6	17th	-1.4%	-	34.7	35.7	28.4	67th	-8%		
		AAB at A level, at least 2 are facilitating	5%	9%	8%	6%	15%	30th	-9%	12%	14%	14%	14%	140th	-8%		
		Three A*-A grades or better at A level	-	5%	6%	5%	12%	29th	-7%	-	11%	11%	11%	137th	-6%		
Post-16	By age 19	Qualified to Level 2 by 19 - All Pupils	89%	87%	86%	85%	85%	19th	0%	86%	85%	84%	82%	40th	+3%		
		Qualified to Level 2 inc Eng & maths by 19 - All Pupils	71%	70%	69%	69%	71%	22nd	-2%	68%	69%	69%	68%	67th	+1%		
		FSM Eligible	52%	55%	55%	50%	56%	26th	-6%	45%	46%	45%	43%	32nd	+7%		
		Not FSM Eligible	74%	73%	72%	73%	75%	17th	-2%	72%	73%	73%	72%	60th	+1%		
		Qualified to Level 3 by 19 - All Pupils	64%	65%	63%	62%	65%	23rd	-3%	57%	57%	57%	57%	38th	+5%		
		FSM Eligible	48%	51%	49%	46%	52%	22nd	-6%	36%	36%	36%	35%	24th	+11%		
		Not FSM Eligible	67%	68%	66%	65%	69%	26th	-4%	61%	61%	61%	61%	37th	+4%		

London rank is generally out of 32. National Rank is generally out of 152. This may vary slightly if any relevant authorities are suppressed for a particular metric. '-' means data is unavailable. '*' means data is suppressed for data protection reasons.

Destinations		Croydon					London			England								
		2014	2015	2016	2017	Trend	Latest Avg.	LA vs London		2014	2015	2016	2017	LA vs England				
								Rank	Latest Diff.					Rank	Latest Diff.	Trend		
									-5% 0% +5%									
KS4 (mainstream)	Overall Education or Employment /Training Destination	-	93%	94%	94%		94%	9th	0%	-	94%	94%	94%	54th	0%	-		
	Further education college or other FE provider	-	22%	22%	20%		23%	23rd	-3%	-	38%	38%	34%	140th	-14%			
	School Sixth Form - state funded	-	53%	51%	49%		55%	24th	-6%	-	39%	39%	39%	50th	+10%			
	Sixth Form College	-	17%	18%	19%		11%	5th	+8%	-	13%	13%	13%	40th	+6%			
	Apprenticeships	-	3%	3%	2%		2%	7th	0%	-	6%	6%	5%	122nd	-3%			
	Destination not sustained	-	5%	4%	5%		4%	15th	-1%	-	5%	5%	5%	52nd	0%			
	Activity not Captured in Data	-	1%	1%	1%		2%	1st	-1%	-	1%	1%	1%	1st	0%			
KS5	Overall Education or Employment /Training Destination	-	85%	86%	85%		88%	29th	-3%	-	88%	89%	89%	142nd	-4%			
	Further education college or other FE provider	-	10%	11%	7%		7%	14th	0%	-	14%	13%	7%	66th	0%			
	Apprenticeships	-	4%	5%	4%		4%	10th	0%	-	7%	7%	6%	122nd	-2%			
	UK Higher Education Institution	-	53%	54%	52%		59%	27th	-7%	-	48%	51%	50%	64th	+2%			
	Top Third of HEIs	-	15%	17%	13%		21%	27th	-8%	-	17%	18%	17%	101st	-4%			
	Russell Group (incl. Ox. and Cam.)	-	7%	7%	7%		14%	29th	-7%	-	11%	12%	12%	130th	-5%			
	Other higher education providers	-	38%	36%	39%		38%	15th	+1%	-	31%	32%	34%	41st	+5%			
	Sustained Employment and/or Training Destination	-	18%	17%	18%		14%	5th	+4%	-	23%	23%	22%	90th	-4%			
	Destination not sustained	-	10%	9%	10%		8%	30th	+2%	-	9%	8%	8%	135th	+2%			
Activity not Captured in Data	-	5%	5%	5%		5%	17th	0%	-	3%	3%	4%	123rd	-1%				

London rank is generally out of 32. National Rank is generally out of 152. This may vary slightly if any relevant authorities are suppressed for a particular metric. '-' means data is unavailable. '*' means data is suppressed for data protection reasons.

		Croydon					London			England							
		2015	2016	2017	2018	Trend	Latest Avg.	LA vs London		2015	2016	2017	2018	LA vs England			
								Rank	Latest Diff.					Rank	Latest Diff.	Trend	
									-5% 0% +5%						-5% 0% +5%		
Travel	Secondary pupils from LA attending school in other LAs	26.2%	26.3%	27.0%	28.2%		21.6%	12th	+6.6%		9.0%	9.2%	9.4%	9.5%	14th	+8.7%	
	Secondary pupils from other LAs attending school in LA	17.2%	17.2%	16.9%	17.0%		20.6%	23rd	-3.6%		9.1%	9.3%	9.4%	9.5%	33rd	+7.5%	
Participation	Apprenticeship starts (Under 19s)	530	530	520	400												
	Apprenticeship achievements (Under 19s)	290	250	310	260												
	16 and 17 year olds who are NEET or not known activity	-	-	10.5%	7.9%		5.0%	28th	+2.9%		-	-	6.0%	6.0%	130th	+1.9%	
	NEET	-	-	1.4%	2.2%		1.8%	30th	+0.4%		-	-	2.8%	2.7%	57th	-0.5%	
	Not known activity	-	-	9.1%	5.7%		3.2%	28th	+2.5%		-	-	3.2%	3.3%	133rd	+2.4%	
	16 year olds in education and training	94%	96%	96%	96%		96%	23rd	0%		94%	95%	95%	95%	55th	-1%	
	Female	96%	97%	96%	97%		97%	19th	0%		95%	95%	96%	96%	29th	-1%	
	Male	93%	95%	95%	94%		96%	27th	-2%		94%	94%	94%	94%	88th	0%	
	17 year olds in education and training	91%	91%	88%	89%		92%	30th	-3%		87%	88%	89%	89%	92nd	0%	
Female	93%	93%	90%	91%		94%	27th	-3%		88%	89%	90%	90%	70th	-1%		
Male	89%	90%	85%	87%		91%	30th	-4%		86%	87%	88%	88%	103rd	-1%		

London rank is generally out of 32. National Rank is generally out of 152. This may vary slightly if any relevant authorities are suppressed for a particular metric. '-' means data is unavailable. '*' means data is suppressed for data protection reasons.

Data sources

Below is the list of data sources. Full footnotes and methodologies can be found within the individual sources.

Pupil Characteristics and Behaviour

<https://www.gov.uk/government/collections/statistics-school-and-pupil-numbers>

<https://www.gov.uk/government/collections/statistics-special-educational-needs-sen>

<https://www.gov.uk/government/collections/statistics-exclusions>

<https://www.gov.uk/government/collections/statistics-pupil-absence>

Secondary Phase Attainment

<https://www.gov.uk/government/collections/statistics-gcses-key-stage-4>

<https://www.gov.uk/government/collections/statistics-attainment-at-19-years>

Destinations

<https://www.gov.uk/government/collections/statistics-destinations>

Travel and Participation

<https://www.gov.uk/government/statistical-data-sets/fe-data-library-apprenticeships>

<https://www.gov.uk/government/publications/neet-and-participation-local-authority-figures>

<https://www.gov.uk/government/publications/participation-in-education-and-training-by-local-authority>

Glossary

KS4 - Key Stage 4

KS5 - Key Stage 5

FSM - Free School Meals

LA - Local Authority

APS - Average Point Score

IDACI - Income Deprivation Affecting Children Index

LSOA - Lower Super Output Area. An area with population of approximately 1500 used in Census and other datasets.

NEET - Not in Education, Employment or Training.

Level 2 - Attainment of Level 2 equates to achievement of 5 or more GCSEs at grades A*-C or equivalent qualifications.

Level 3 - Level 3 equates to achievement of 2 or more A-levels or equivalent qualifications.

Including Ox. and Cam. - Including students at the University of Oxford and the University of Cambridge.

Mainstream - Not including Independent schools.

Young People's Education and Skills provides pan-London leadership for 14 to 19 education and training provision in relation to the current and future needs of learners and employers, supports local authorities in undertaking their statutory functions, and assists other stakeholders in planning, policy and provision.



London Councils
59½ Southwark Street
London
SE1 0AL

www.londoncouncils.gov.uk

Mime are experts in communicating complex information with clarity within the education sector. We are passionate about using data to improve the life chances of young people.



Mime
144 Clapham Manor
Street
Clapham
London SW4 6BX

www.mimeconsulting.co.uk
info@mimeconsulting.co.uk
0208 099 4240