

# Local Overview

*Croydon*

January 2018



INTELLIGENT  
LONDON

## Purpose of this dashboard

This dashboard draws together a range of performance indicators into a concise, graphical report. It compares your Local Authority performance against all other London LAs and England, and shows trends over time. It can be used to:

- identify relative strengths and weaknesses in performance
- plan and commission services
- inform self-evaluation and set targets
- demonstrate impact and effectiveness

## Contents

- 3 How to Interpret the Analysis**
- 4 Local Landscape**
- 5 Pupil Characteristics and Behaviour**
- 6 Secondary Phase Attainment**
- 7 Destinations**
- 8 Travel and Participation**
- 9 Notes**

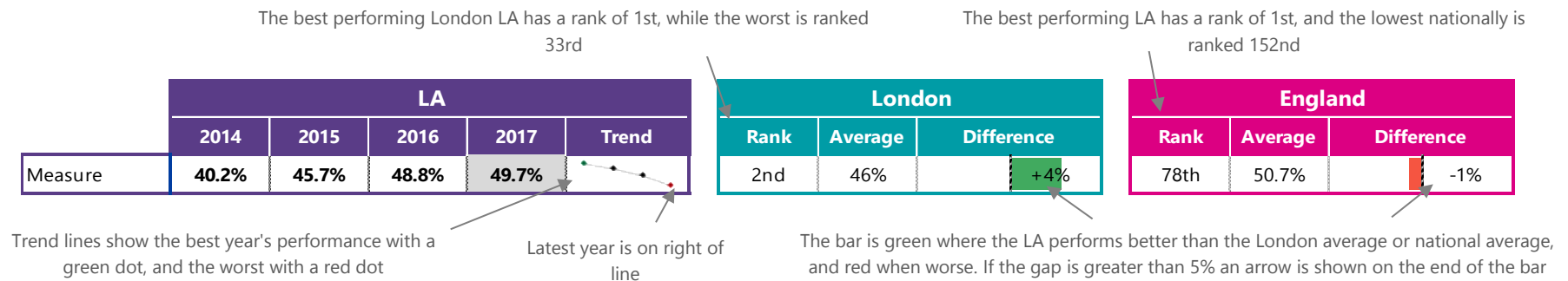
## Latest updates

Validated Key Stage 4 and Key Stage 5  
Participation data for 16 and 17 year olds  
Secondary travel data

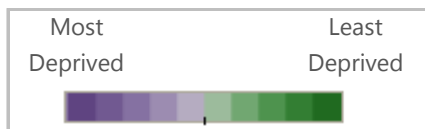
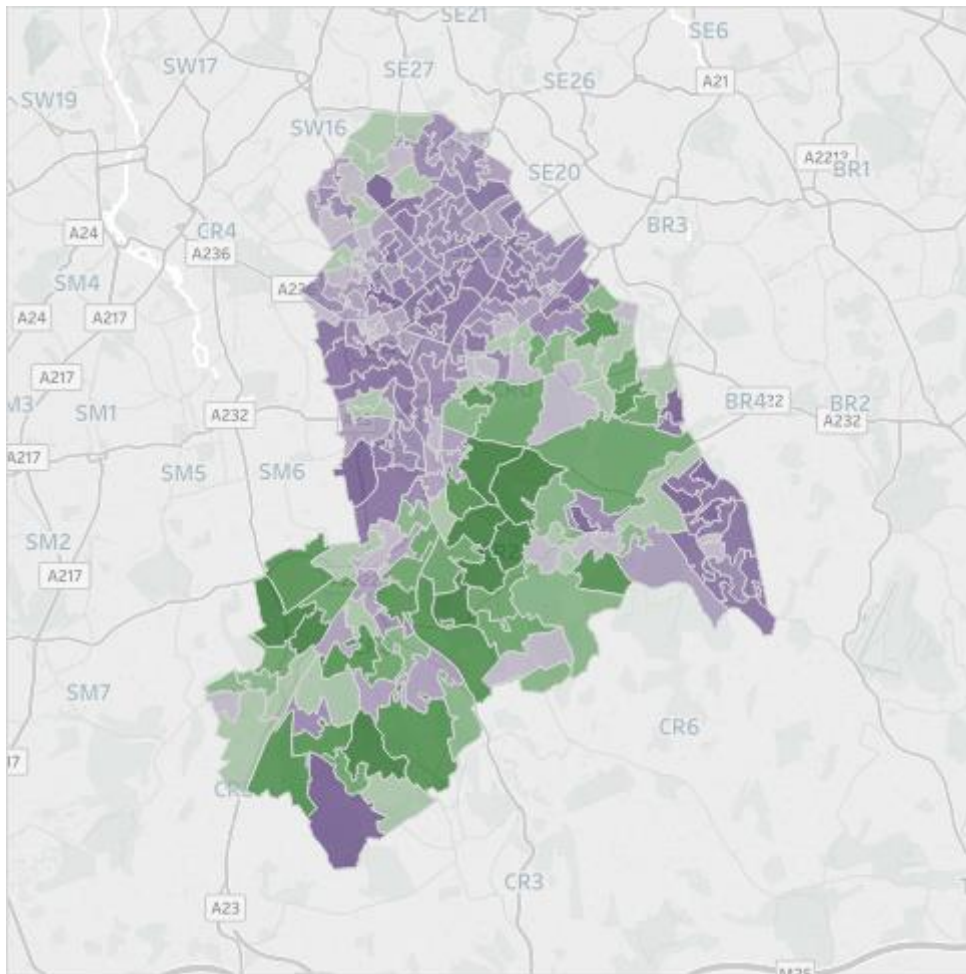
Each indicator on the dashboard has:

- a trend line to show the LA's change over time for up to four years (subject to availability of the data)
- a rank of the LA indicator against the 32 other London LAs and the 152 LAs nationally (although in some instances some LA data is suppressed and therefore excluded from the rankings)
- two bar charts showing the difference to the London average and the national average. Note that if the indicator is a percentage the difference is in percentage points; for example, 20% vs 23% is a 3% point difference. If the indicator is a number, the difference is a percentage, for example, 100 vs 110 is a 10% difference.

Note that for some indicators better performance means a higher percentage (e.g. achievement of attainment thresholds), while in other cases lower means better (e.g. absence rates).



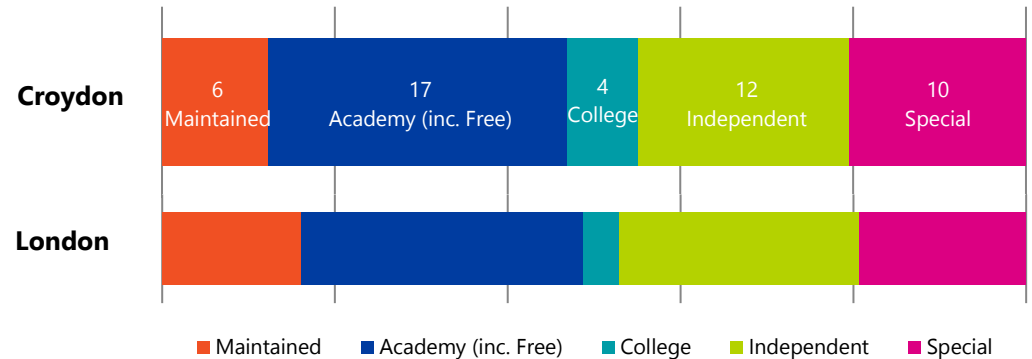
## Income Deprivation Affecting Children (IDACI) Map



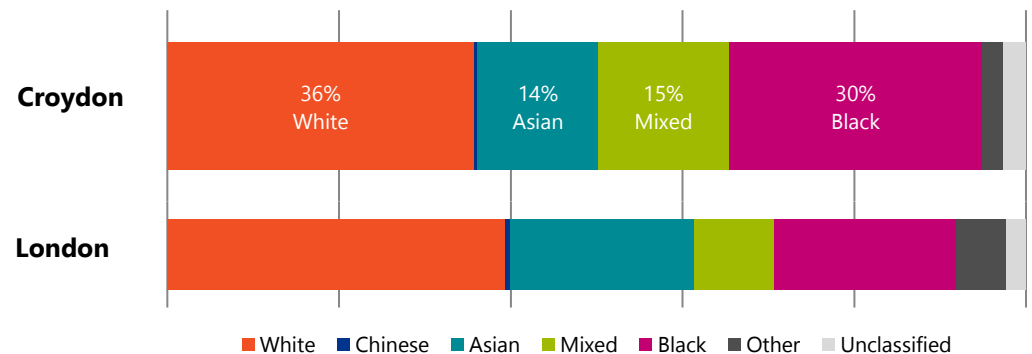
Deprivation ranks are based on the Income Deprivation Affecting Children Index (IDACI). This ranks each LSOA (an area of about 1000 households) in order of the 32,844 LSOAs nationally. LSOAs are grouped into 10 coloured bands, where the darkest purple is an LSOA in the 10% most deprived nationally, and darkest green is in the 10% least deprived nationally.

## Breakdown Analysis

### Composition of Secondary and Post-16 Provision



### Ethnicity



		Croydon					London			England			
		2014	2015	2016	2017	Trend	Rank	Average	Difference	Rank	Average	Difference	
									-5% 0% +5%			-5% 0% +5%	
LA Info	Secondary state-funded pupil roll	22,105	22,002	22,193	<b>22,206</b>								
	Special school state-funded pupil roll	728	788	795	<b>819</b>								
Demographics Secondary	Free School Meals eligible % (FSM)	18.1%	18.1%	17.2%	<b>16.6%</b>		19th	17.0%	-0.4%		107th	12.9%	-3.7%
	English as additional language % (EAL)	23.3%	24.4%	26.3%	<b>26.2%</b>		27th	41.5%	-15.4%		40th	16.2%	+10.0%
	SEN Support %	17.9%	13.3%	11.5%	<b>10.8%</b>		17th	10.9%	-0.1%		83rd	10.7%	-0.1%
	SEN education, health and care plan % (EHCP)	1.7%	1.8%	1.9%	<b>1.9%</b>		16th	2.0%	-0.0%		53rd	1.7%	-0.3%
Abs. & Excl. Secondary	Exclusions - Fixed Term	5.9%	5.6%	6.4%	<b>6.5%</b>		16th	6.9%	-0.3%		53rd	8.5%	-1.9%
	Absence - Overall	5.1%	4.8%	4.9%	<b>4.8%</b>		13th	4.9%	-0.1%		23rd	5.2%	-0.4%
	Absence - Authorised	3.5%	3.3%	3.3%	<b>3.1%</b>		4th	3.5%	-0.4%		6th	3.8%	-0.7%
	Absence - Unauthorised	1.6%	1.5%	1.6%	<b>1.7%</b>		26th	1.4%	+0.3%		110th	1.4%	+0.3%
	Absence - Persistent Absentees	13.0%	11.7%	11.6%	<b>11.8%</b>		17th	11.7%	+0.1%		39th	13.1%	-1.3%

London rank is generally out of 32. National Rank is generally out of 152. This may vary slightly if any relevant authorities are suppressed for a particular metric. '-' means either data is unavailable or is suppressed for data protection reasons.

		Croydon					London			England		
		2014	2015	2016	2017	Trend	Rank	Average	Difference	Rank	Average	Difference
									-5% 0% +5%			-5% 0% +5%
Key Stage 4	Attainment 8	-	-	48.5	<b>45.0</b>		30th	48.9	-8.0%	96th	46.4	-3.0%
	Progress 8	-	-	+0.08	<b>+0.06</b>		26th	+0.22	-0.16	40th	-0.03	+0.09
	English Baccalaureate Achievements w. 9-4 English & Maths	25.6%	26.9%	23.8%	<b>23.5%</b>		29th	32.0%	-8.5%	72nd	23.9%	-0.4%
	English Baccalaureate Achievements w. 9-5 English & Maths	-	-	-	<b>20.6%</b>		29th	28.8%	-8.2%	73rd	21.4%	-0.8%
	English Baccalaureate Entries	44.2%	45.7%	44.6%	<b>42.7%</b>		25th	50.0%	-7.3%	45th	38.4%	+4.3%
	9-4 (A*-C) in Eng & Maths	59.2%	61.9%	60.6%	<b>60.9%</b>		30th	67.9%	-7.0%	102nd	64.2%	-3.3%
	9-5 in Eng & Maths	-	-	-	<b>40.6%</b>		30th	48.2%	-7.6%	88th	42.9%	-2.3%
Key Stage 5	APS per Entry - All Level 3	-	-	32.40	<b>33.73</b>		7th	32.25	+5%	23rd	32.33	+4%
	A Level	-	-	27.75	<b>28.43</b>		27th	31.43	-10%	127th	31.13	-9%
	Academic	-	-	27.79	<b>28.48</b>		27th	31.55	-10%	128th	31.32	-9%
	Tech level	-	-	37.51	<b>38.55</b>		4th	32.74	+18%	6th	32.25	+20%
	Applied General	-	-	37.01	<b>40.29</b>		3rd	34.37	+17%	9th	35.69	+13%
	AAB at A Level, at least 2 are facilitating (% of A Level Students)	6.7%	5.0%	8.5%	<b>7.7%</b>		29th	16.0%	-8.3%	134th	14.3%	-6.6%
	Three A*-A grades or better at A Level (% of A Level students)	-	-	4.5%	<b>5.8%</b>		24th	11.6%	-5.8%	132nd	11.1%	-5.3%
Level 2 and 3 by Age 19	Level 2 by 19 (Mainstream)	87%	88%	88.6%	<b>87.0%</b>		16th	87.6%	-0.6%	37th	85.3%	+1.8%
	Level 2 inc Eng and Maths by 19 (Mainstream)	63%	67%	70.7%	<b>69.5%</b>		20th	71.5%	-2.0%	57th	68.6%	+0.9%
	FSM Eligible	47%	48%	51.8%	<b>55.0%</b>		20th	58.2%	-3.2%	21st	45.8%	+9.3%
	Not FSM Eligible	66%	70%	74.0%	<b>72.9%</b>		24th	75.6%	-2.7%	70th	72.6%	+0.3%
	Level 3 by 19 (Mainstream)	62%	64%	64.4%	<b>64.6%</b>		19th	65.4%	-0.8%	26th	57.1%	+7.5%
	FSM Eligible	48%	50%	48.4%	<b>50.6%</b>		19th	53.9%	-3.3%	21st	36.2%	+14.4%
	Not FSM Eligible	64%	67%	67.2%	<b>67.9%</b>		21st	68.9%	-1.1%	27th	60.7%	+7.1%

London rank is generally out of 32. National Rank is generally out of 152. This may vary slightly if any relevant authorities are suppressed for a particular metric. '-' means either data is unavailable or is suppressed for data protection reasons.

		Croydon					London			England		
		2012	2013	2014	2015	Trend	Rank	Average	Difference	Rank	Average	Difference
							-5% 0% +5%			-5% 0% +5%		
Key Stage 4 Destination Measures	Overall Education or Employment /Training Destination	91%	92%	93%	<b>94%</b>		10th	94%	0%	52nd	94%	0%
	Further education college or other FE provider	-	-	22%	<b>22%</b>		20th	25%	-3%	139th	38%	-16%
	School Sixth Form - state funded	48%	51%	53%	<b>51%</b>		22nd	55%	-4%	45th	39%	+12%
	Sixth Form College	18%	15%	17%	<b>18%</b>		6th	12%	+6%	40th	13%	+5%
	Apprenticeships	2%	2%	3%	<b>3%</b>		8th	3%	0%	123rd	6%	-3%
	Destination not sustained	6%	5%	5%	<b>4%</b>		6th	5%	-1%	13th	5%	-1%
	Activity not Captured in Data	3%	2%	1%	<b>1%</b>		1st	1%	0%	1st	1%	0%
Key Stage 5 Destination Measures	Overall Education or Employment /Training Destination	67%	71%	85%	<b>86%</b>		26th	88%	-2%	133rd	89%	-3%
	Further education college or other FE provider	-	-	10%	<b>11%</b>		11th	10%	+1%	91st	13%	-2%
	Apprenticeships	3%	3%	4%	<b>5%</b>		7th	4%	+1%	111st	7%	-2%
	UK Higher Education Institution	51%	46%	53%	<b>54%</b>		28th	61%	-7%	55th	51%	+3%
	Top Third of HEIs	15%	13%	15%	<b>17%</b>		29th	25%	-8%	68th	18%	-1%
	Russell Group (incl. Ox. and Cam.)	6%	5%	7%	<b>7%</b>		28th	14%	-7%	126th	12%	-5%
	Other higher education institutions or providers	-	-	38%	<b>36%</b>		20th	35%	+1%	58th	32%	+4%
	Sustained Employment and/or Training Destination	2%	4%	18%	<b>17%</b>		7th	14%	+3%	107th	23%	-6%
	Destination not sustained	8%	9%	10%	<b>9%</b>		23rd	8%	+1%	101st	8%	+1%
Activity not Captured in Data	23%	19%	5%	<b>5%</b>		25th	4%	+1%	137th	3%	+2%	

London rank is generally out of 32. National Rank is generally out of 152. This may vary slightly if any relevant authorities are suppressed for a particular metric. '-' means either data is unavailable or is suppressed for data protection reasons.

		Croydon					London			England		
		2014	2015	2016	2017	Trend	Rank	Average	Difference	Rank	Average	Difference
							-5% 0% +5%			-5% 0% +5%		
Travel	Secondary pupils living in LA attending schools in other LAs	25.5%	26.2%	26.3%	<b>27.0%</b>		13th	21.5%	-5.5%	15th	9.4%	+17.6%
	Secondary pupils living in other LAs attending schools in the LA	17.4%	17.2%	17.2%	<b>16.9%</b>		22nd	20.5%	-3.6%	32nd	9.4%	-7.5%
Participation	Apprenticeship starts (Under 19s)	520	510	530	<b>530</b>							
	Apprenticeship achievements (Under 19s)	260	260	290	<b>250</b>							
	NEET 16 and 17 year olds (inc. not known)	-	-	-	<b>10.5%</b>		32nd	5.3%	-5.2%	149th	6.0%	-4.5%
	16 year olds in education and training	86.4%	94.6%	95.5%	<b>95.1%</b>		25th	96.0%	-0.9%	55th	94.2%	-0.9%
	<i>Female</i>	86.9%	95.8%	96.4%	<b>96.5%</b>		20th	96.7%	-0.2%	34th	94.9%	-1.6%
	<i>Male</i>	86.0%	93.2%	94.8%	<b>93.9%</b>		25th	95.3%	-1.4%	76th	93.5%	-0.4%
	17 year olds in education and training	84.5%	91.7%	91.1%	<b>88.3%</b>		31st	92.5%	-4.1%	95th	88.7%	-0.3%
<i>Female</i>	86.4%	93.5%	93.1%	<b>90.6%</b>		30th	93.8%	-3.2%	79th	89.8%	-0.8%	
<i>Male</i>	83.4%	90.0%	89.4%	<b>86.1%</b>		31st	91.2%	-5.1%	111st	87.6%	-1.4%	

London rank is generally out of 32. National Rank is generally out of 152. This may vary slightly if any relevant authorities are suppressed for a particular metric. '-' means either data is unavailable or is suppressed for data protection reasons.



## Data sources

Below is the list of data sources. Full footnotes and methodologies can be found within the individual sources.

### Pupil Characteristics and Behaviour

<https://www.gov.uk/government/statistics/schools-pupils-and-their-characteristics-january-2017>

<https://www.gov.uk/government/collections/statistics-pupil-absence>

<https://www.gov.uk/government/collections/statistics-exclusions>

### Secondary Phase Attainment

<https://www.gov.uk/government/collections/statistics-gcses-key-stage-4>

<https://www.gov.uk/government/collections/statistics-attainment-at-19-years>

### Destinations and Participation

<https://www.gov.uk/government/collections/statistics-destinations>

<https://www.gov.uk/government/statistical-data-sets/fe-data-library-apprenticeships>

<https://www.gov.uk/government/publications/participation-in-education-and-training-by-local-authority>

<https://www.gov.uk/government/publications/neet-data-by-local-authority-2012-16-to-18-year-olds-not-in-education-employment-or-training>

## Glossary

**KS4** - Key Stage 4

**KS5** - Key Stage 5

**FSM** - Free School Meals

**LA** - Local Authority

**APS** - Average Point Score

**IDACI** - Income Deprivation Affecting Children Index

**LSOA** - Lower Super Output Area. An area with population of approximately 1500 used in Census and other datasets.

**NEET** - Not in Education, Employment or Training.

**Level 2** - Attainment of Level 2 equates to achievement of 5 or more GCSEs at grades A\*-C or equivalent qualifications.

**Level 3** - Level 3 equates to achievement of 2 or more A-levels or equivalent qualifications.

**Including Ox. and Cam.** - Including students at the University of Oxford and the University of Cambridge.

**Mainstream** - Not including Independent schools.

**Schooled** - This data relates to the attainment of qualifications taken at settings within the Local Authority rather than the students' place of residence.

*Young People's Education and Skills provides pan-London leadership for 14 to 19 education and training provision in relation to the current and future needs of learners and employers, supports local authorities in undertaking their statutory functions, and assists other stakeholders in planning, policy and provision.*



*London Councils*  
59½ Southwark Street  
London  
SE1 0AL

[www.londoncouncils.gov.uk](http://www.londoncouncils.gov.uk)

---

*Mime are experts in communicating complex information with clarity within the education sector. We are passionate about using data to improve the life chances of young people.*



*Mime*  
144 Clapham Manor  
Street  
Clapham  
London SW4 6BX

[www.mimeconsulting.co.uk](http://www.mimeconsulting.co.uk)  
[info@mimeconsulting.co.uk](mailto:info@mimeconsulting.co.uk)  
0208 099 4240