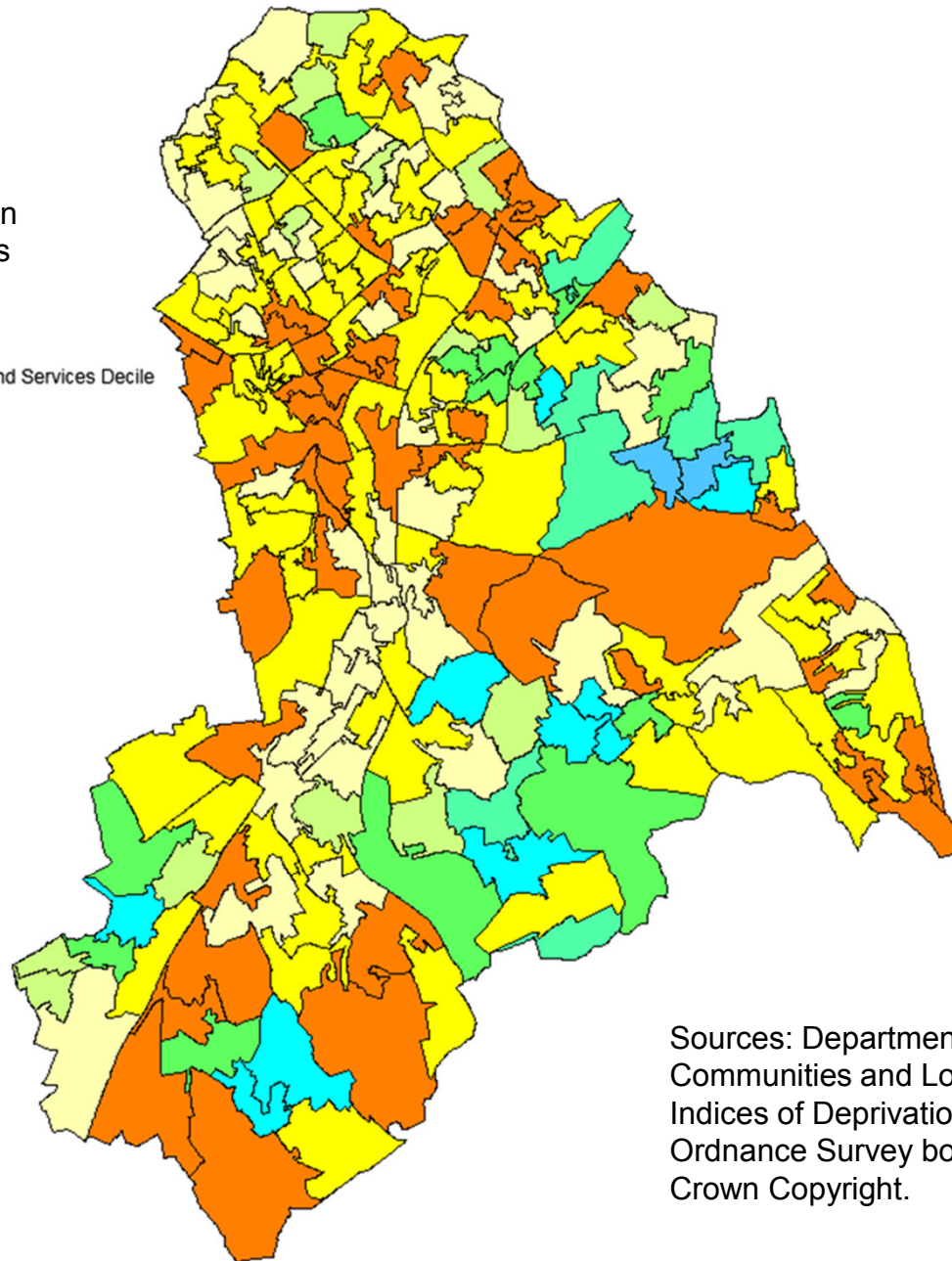


# Barriers to Housing and Services deciles 2015

Note: LSOAs in the 1<sup>st</sup> decile are in the top 10% most deprived LSOAs in the country.

Croydon LSOAs by Barriers to Housing and Services Decile

1st decile	(48)
2nd decile	(77)
3rd decile	(48)
4th decile	(15)
5th decile	(14)
6th decile	(7)
7th decile	(9)
8th decile	(2)
9th and 10th deciles	(0)



Sources: Department for Communities and Local Government Indices of Deprivation 2015 and Ordnance Survey boundary data. Crown Copyright.