

# Census 2011

Update to CMT – August 2012

# Content

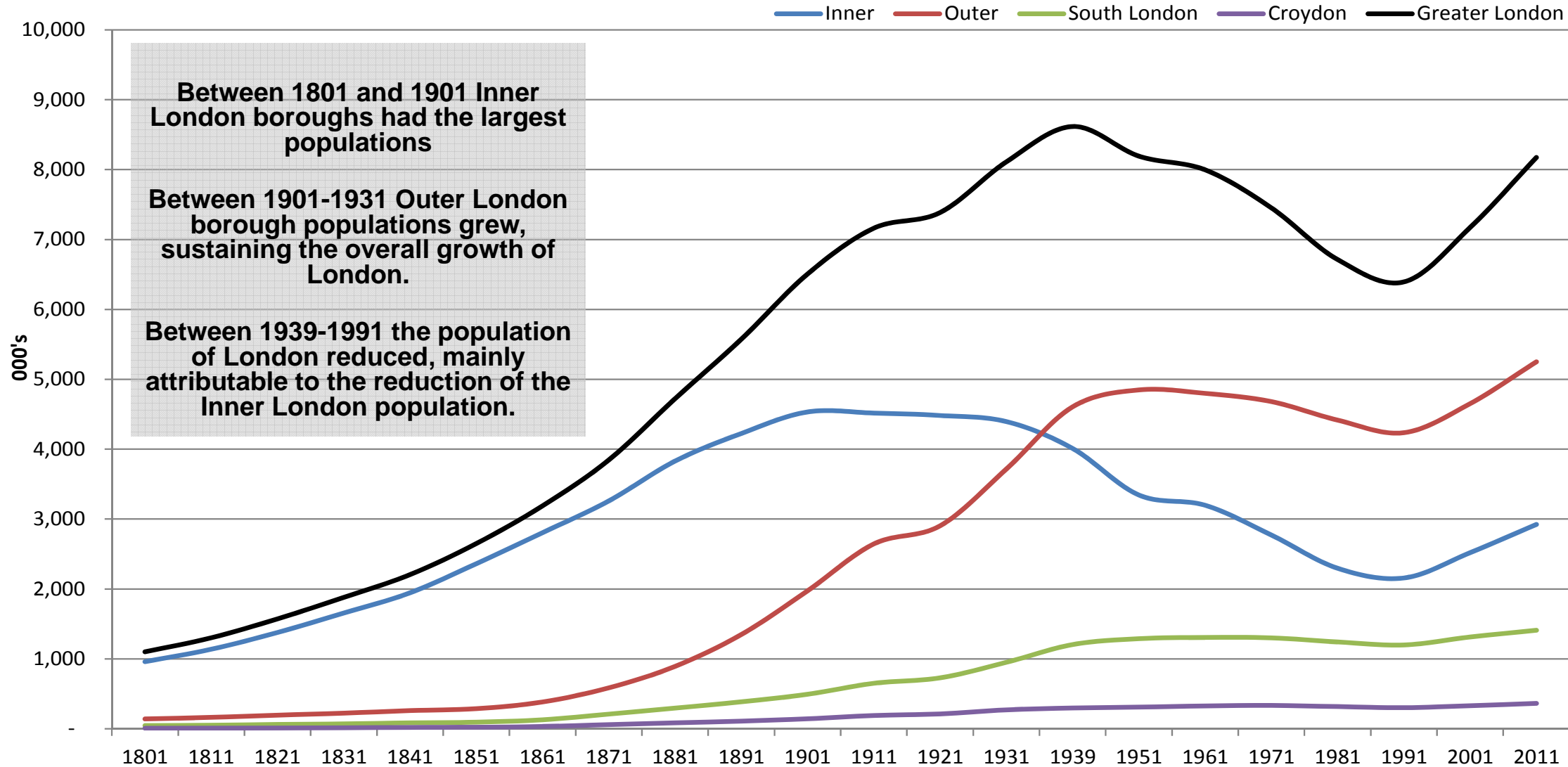
- Headlines
- London Context
- Croydon Context
- Release Timetable
- Managing expectations
- Next Steps

Since 1801, one day has been set aside every ten years for the census - a count of all people and households. It is our most comprehensive source of information about Croydon's population. The latest census was held on **Sunday 27 March 2011.**

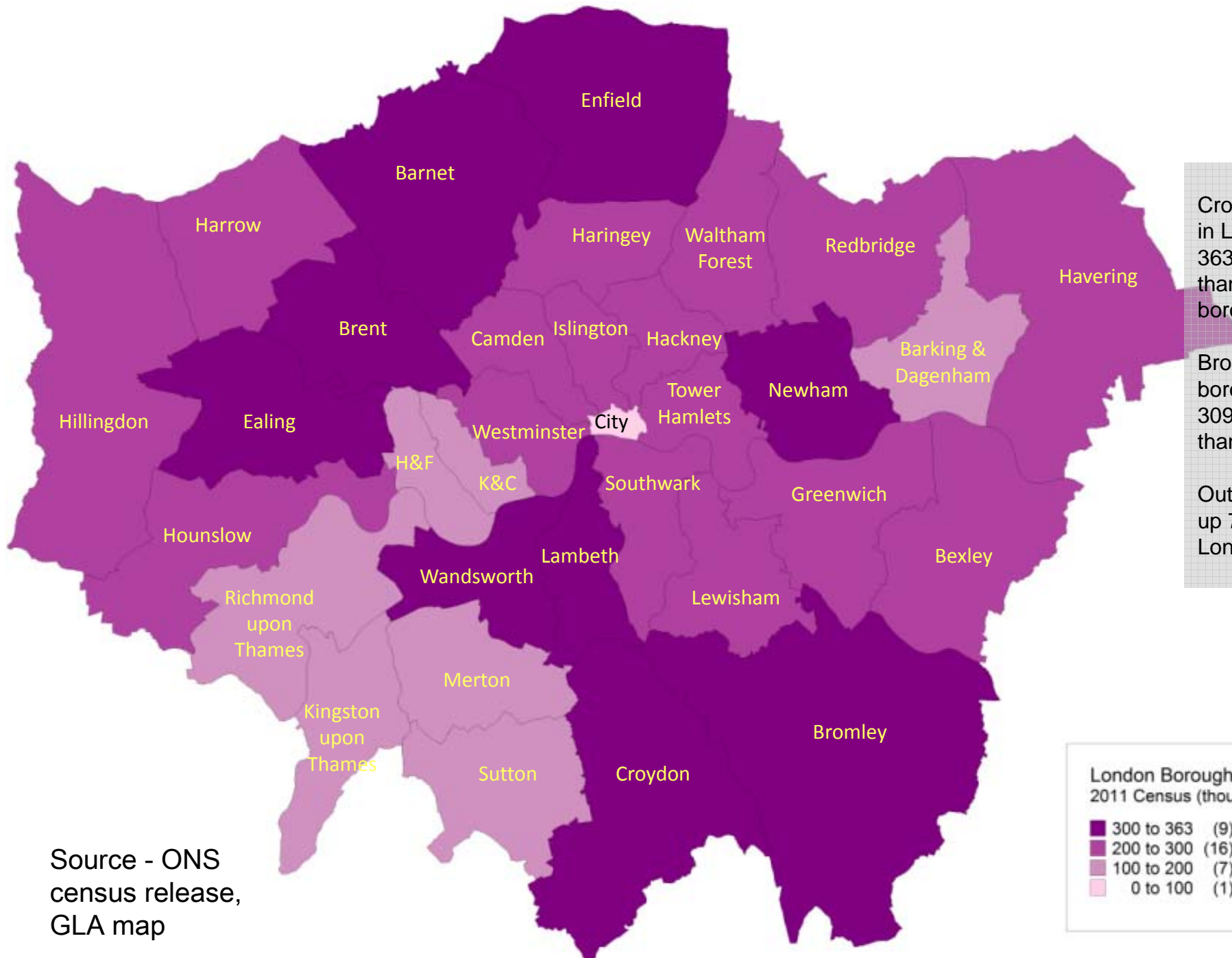
# The headlines – what do we know so far?

- England & Wales population has grown by 7.1% since 2001 and now stands at 56.1 million
- 10% population growth in Croydon compared with 14% outer London
- Croydon has the largest population of all London Boroughs, 363,400
- Gender split in Croydon - 48% male, 52% female
- Population is larger than projected – impact on grant funding
- Significantly more people in 0-34yrs age range than projected, and fewer above 40yrs

# Historical Context



# London – 2011 census population



Croydon is the largest borough in London with a population of 363,400, which is 7,000 more than the next largest London borough – Barnet.

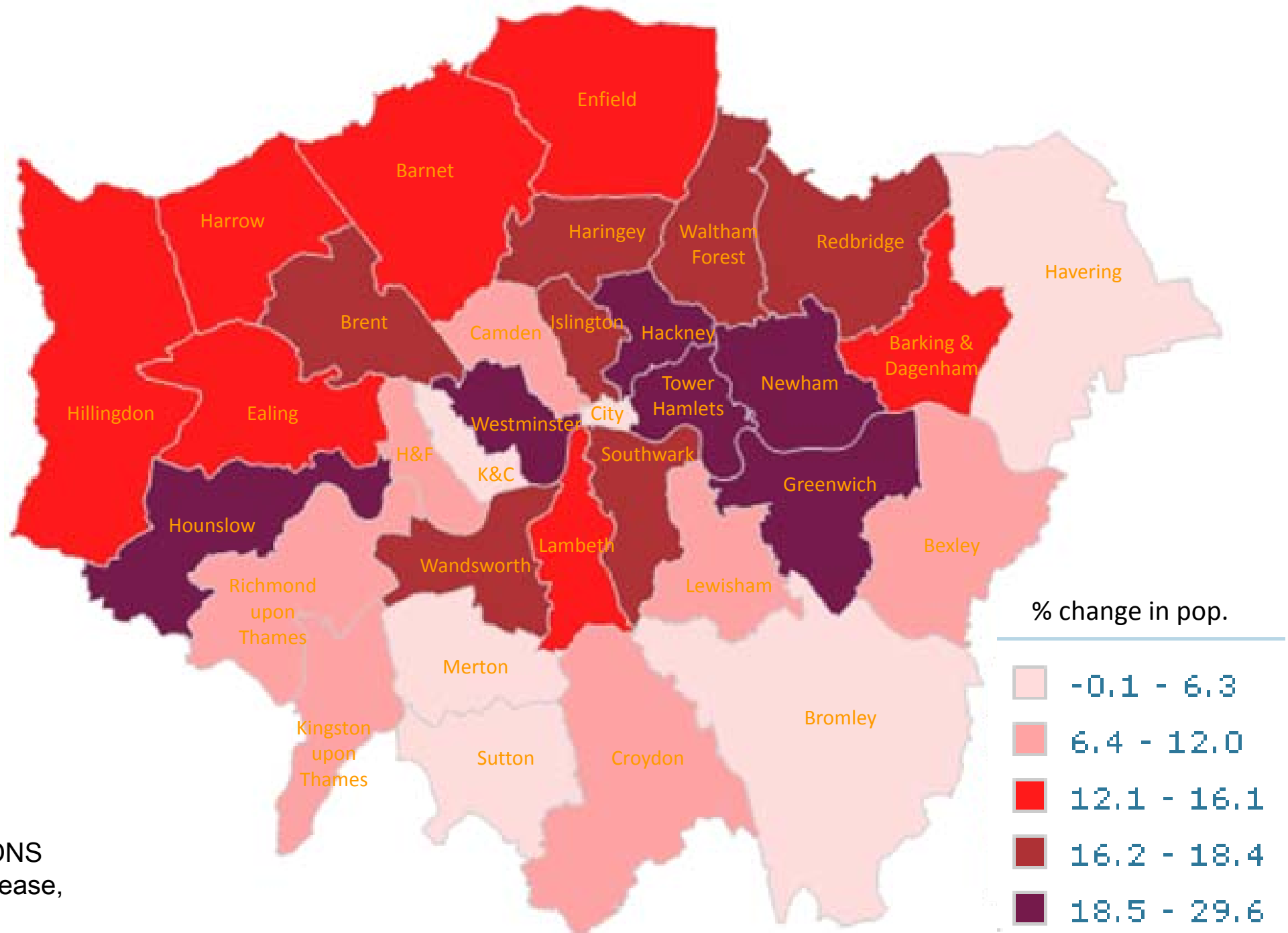
Bromley is the next largest borough and has a population of 309,400 which is 54,000 less than Croydon.

Outer London boroughs make up 7 of the 10 most populated in London.

300 to 363	(9)
200 to 300	(16)
100 to 200	(7)
0 to 100	(1)

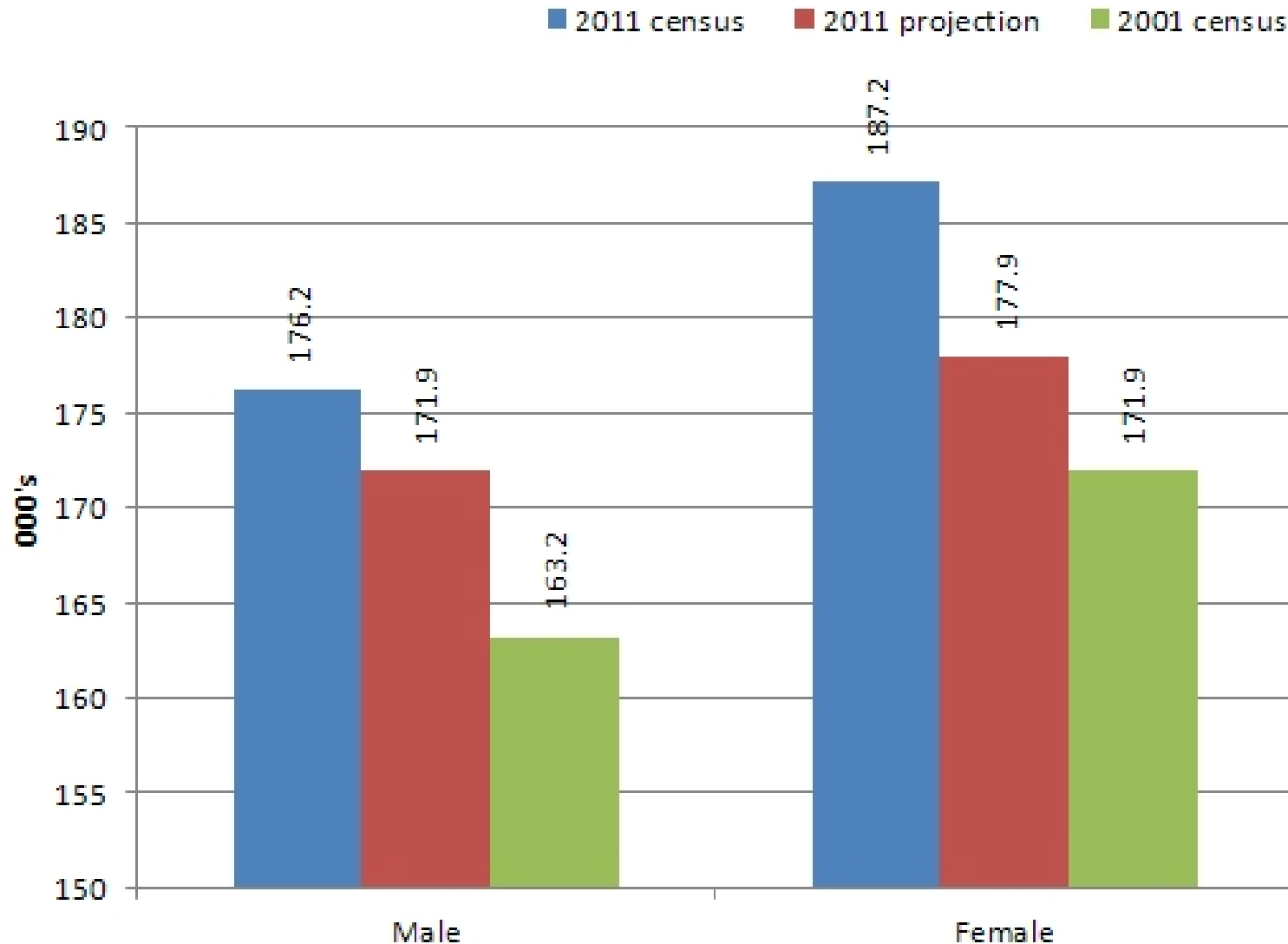
Source - ONS census release, GLA map

# London – population change 2001 to 2011



Source - ONS  
census release,  
GLA map

# Croydon - population growth



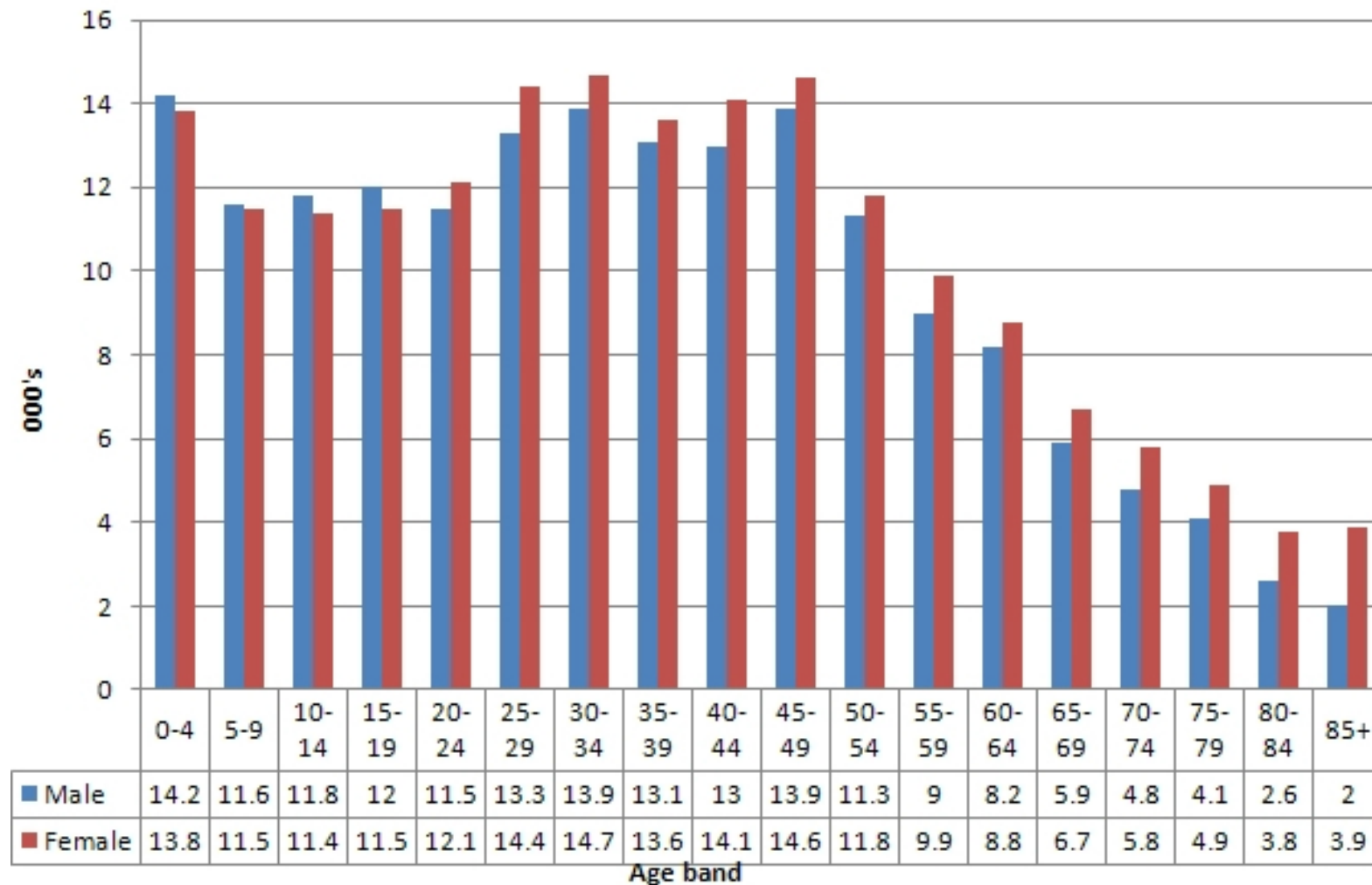
Overall, the 2011 projections (based on the 2001 census) expected the population to grow by 4.4% over the 10 years, but the actual growth is 9.9%

# Croydon – impact on grant funding

- To follow



# Age and gender breakdown 2011 (Croydon)

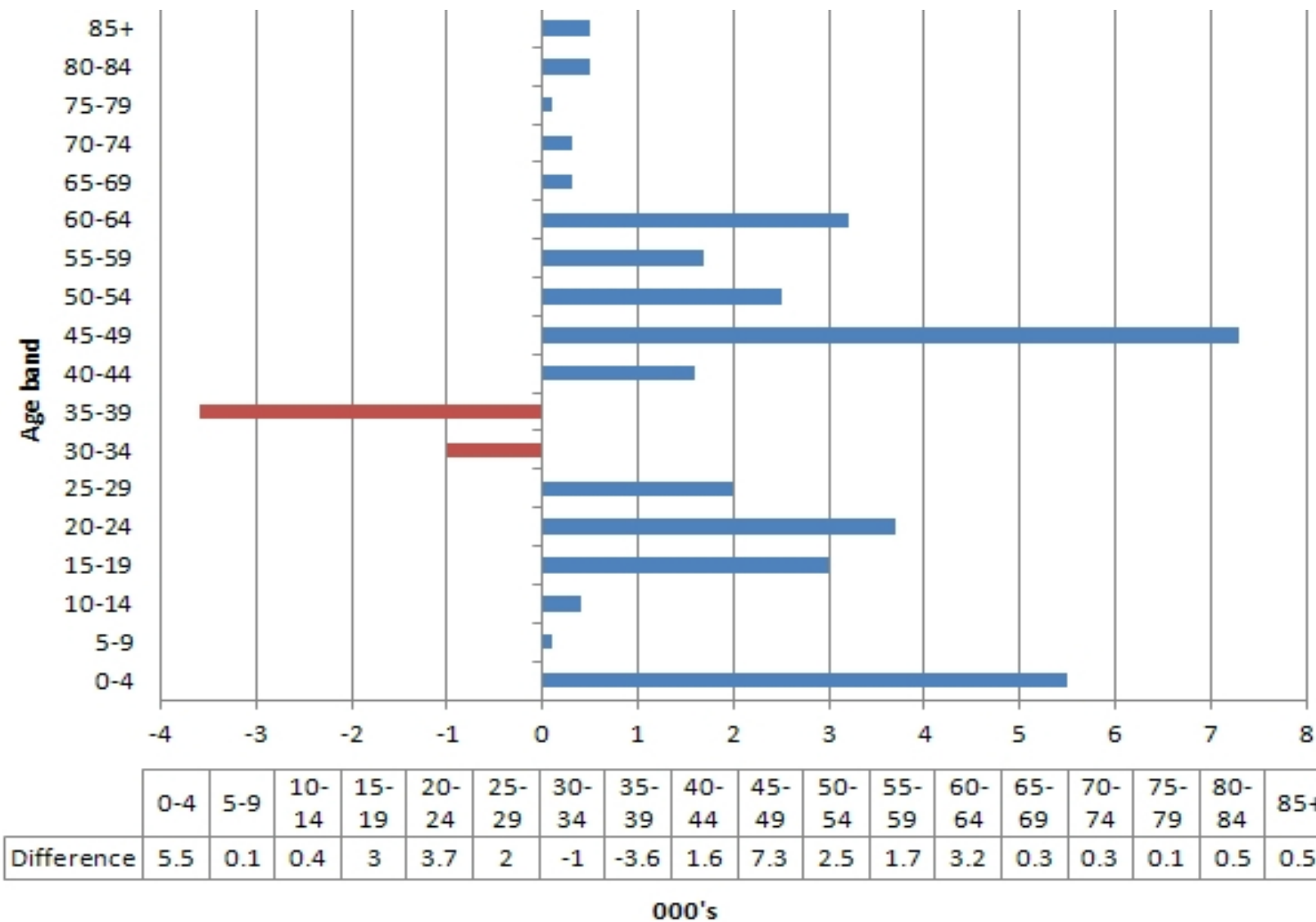


There are 176,200 males (48%) and 187,200 females (52%)

There are more males in the 0-19 age group, thereafter, the female population exceed the males for all other groups

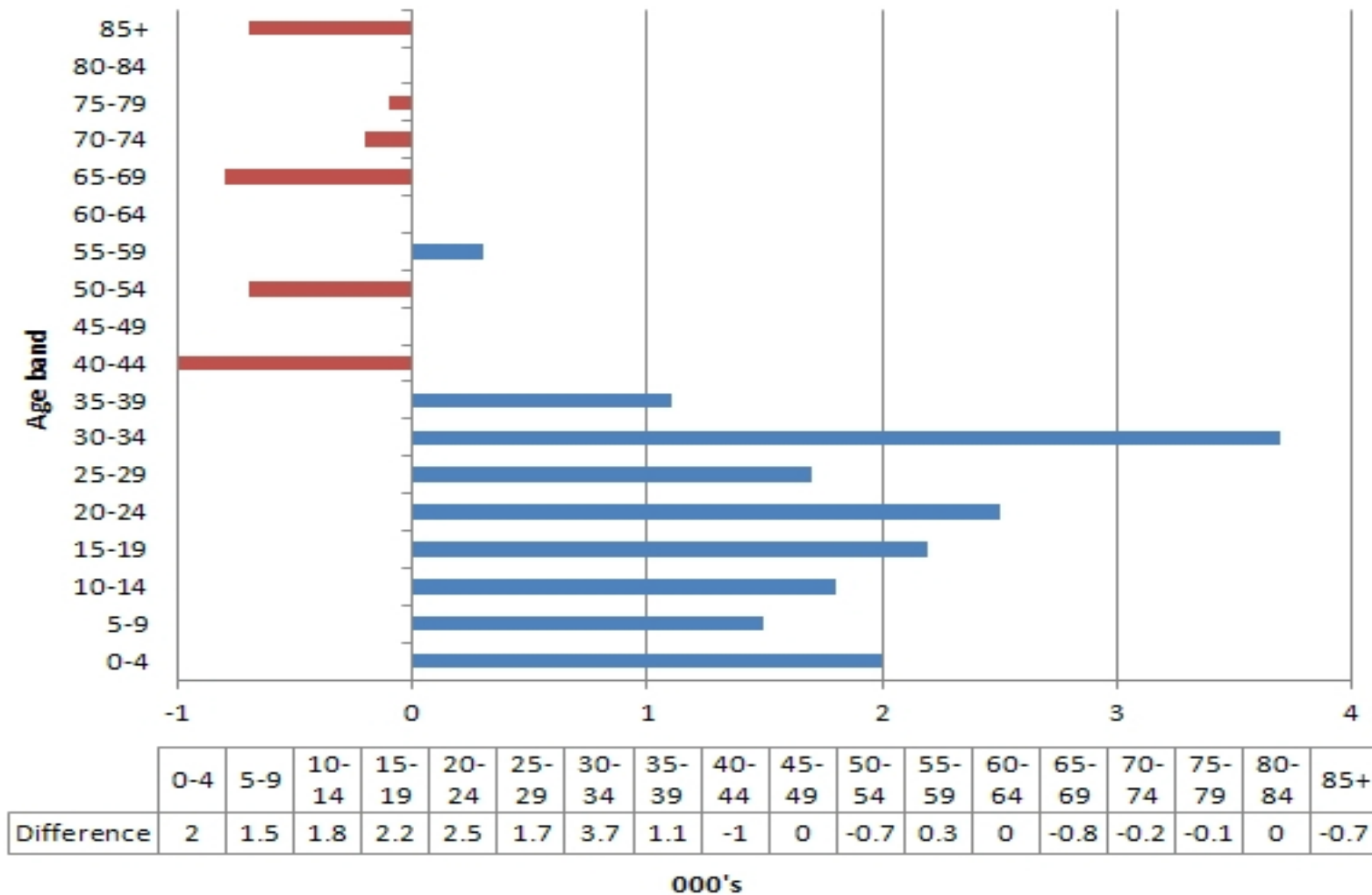
There are almost double the number of females over 85 compared to males

# Age: 2001 census v 2011 census (Croydon)



Comparing data from the two censuses shows that there are 14,700 more 0-29 year olds, 4,600 fewer 30-39 year olds and 18,000 more 40 to 85+ year olds

# Age: 2011 projection vs 2011 census (Croydon)



Comparing the 2011 projections against the 2011 census shows that there are 16,500 more 0-34 year olds than expected and 3,200 fewer 40 to 85+ year olds, equating to an overall difference of 13,600 (3.9%)

# Release timetable

The statistics on the main resident population base will be released by ONS in four stages

- **First release: 16th July 2012**
  - Resident census population estimates for England/Wales, single year of age and sex
  - Local authorities by five year age bands and sex
- **Second release: November 2012 to February 2013**
  - Key and univariate statistics for a range of geographies including ward and LSOA
  - Data will include age structure, marital status, ethnic group and country of birth, main language, religion, health and provision of unpaid care, economic activity

# Release timetable

- **Third release: March 2013 to June 2013**
  - Multivariate statistics for a range of geographies including ward and LSOA
  - Examples of data tables include:
    - Age by sex and resident type
    - Sex and age by ethnic group
    - Sex and age by economic activity
    - Sex and age by general health and provision of unpaid care
    - Country of birth by age and sex
- **Fourth release: July 2013 and October 2013**
  - Multivariate statistics for remaining geographies

# Managing expectations

Comms plan to ensure that key stakeholders are sufficiently informed on when different data sets will be available.

**Key messages** – (a) headlines around population dynamics (b) release timetable

Communication	Audience
CMT/DMT briefing	Internal council
LOOP article	Internal council
Members bulletin article	Internal council
Schools bulletin article	External
Chief executive's group briefing	Key partners
Stronger communities bulletin article	Voluntary sector
Your Croydon article	Residents
Croydon observatory website	Internal council/external audiences and stakeholders/residents
Croydon.gov.uk website	Internal council/external audiences and stakeholders/residents

# Support from SCPP (internal & external)

- Analysis and briefings for each release
- Review of developing strategies / policies for immediate impact
- Support to analyse impact on front-line services
- Ensuring commissioning activity reflects census impact where appropriate
- Link with communications
- Improved observatory functionality
- Borough profile / consolidated needs assessment
- Supporting EQIA using new data
- Hands-on support where needed